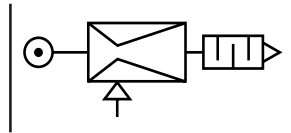
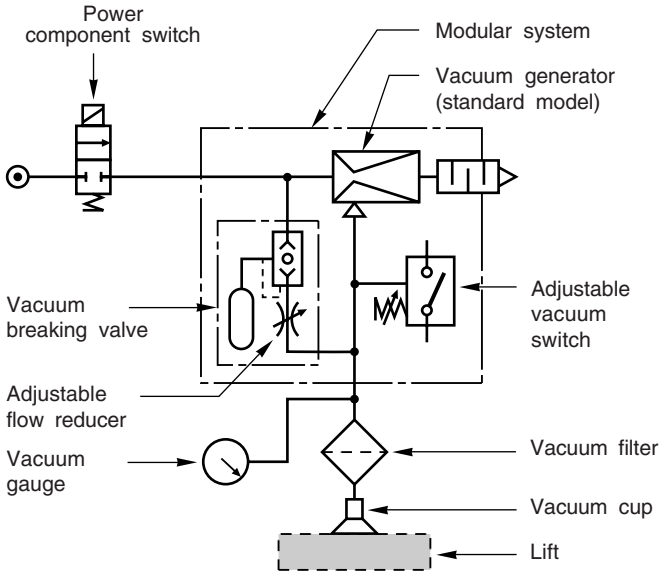


MODULAR VACUUM GENERATOR WITH VENTURI EFFECT SINGLE STAGE NOZZLE



GENERAL

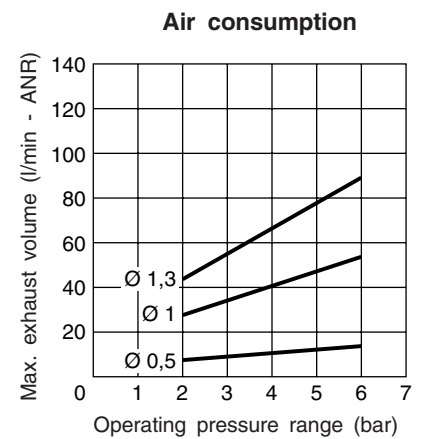
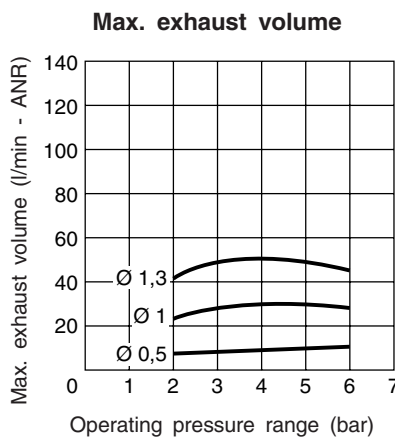
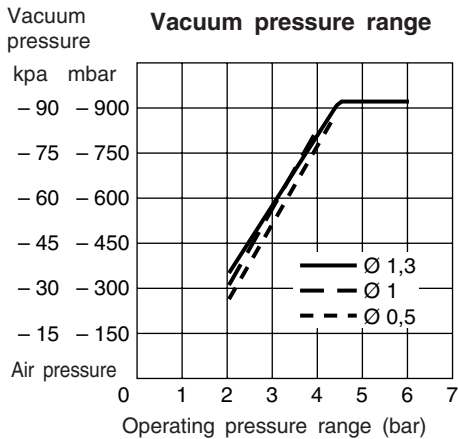
The modular vacuum generator with Venturi effect single stage nozzle offers several advantages : it is compact, lightweight, simple to install and of easy maintenance (no sliding parts). This modular vacuum generator can be equipped with different adjustable accessories : vacuum breaking valve, control vacuum switch, etc...



SPECIFICATIONS

FLUID	: Compressed air, filtered 5 to 20 µm, dry, not lubricated
OPERATING PRESSURE RANGE	: 2 to 6 bar
ULTIMATE VACUUM PRESSURE	: - 920 mbar (92% vacuum, obtained from 5 bar)
CONNECTOR	: G 1/8
TEMPERATURE AMBIENT	: 0°C, + 50°C
NOZZLE DIAMETER	: 0.5 - 1 - 1.3 mm
MAX. EXHAUST VOLUME (at 5 bar)	: 6 l/min - ANR (Ø 0.5) 30 l/min - ANR (Ø 1) 48 l/min - ANR (Ø 1.3)
AIR CONSUMPTION	: See diagram below

CHARACTERISTICS OF THE SINGLE STAGE VACUUM GENERATOR



VACUUM GENERATOR SINGLE NOZZLE (Standard model)

The standard model includes the vacuum generator single nozzle, with a G 1/8 connector and a built-in silencer. This product is available in three versions, depending on the diameter of the nozzle (Ø 0.5 - 1 - 1.3 mm).

CODES	Ø nozzle (mm)	Max. exhaust volume (at 5 bar) (l/min - ANR)	Air consumption at 5 bar (l/min - ANR)	Ultimate vacuum pressure (mbar)	Connector	Weight (g)
367 00 001	0,5	6	11	- 920	G 1/8	64
367 00 002	1	30	44			
367 00 003	1,3	48	78			

VACUUM BREAKING VALVE WITH AIR CAPACITY

The vacuum breaking valve allows better cycle rates by reducing the time needed to release the workpiece. This system starts as soon as an automatic mini chuttle valve interrupts pressure supply and releases compressed air from the reservoir. It "breaks vacuum" and allows faster release of the piece. A built-in flow reducer is used to adjust the release time when several generators and cups are used on the same workpiece.

CODE	Tank capacity (cm ³)	Connector	Weight (g)
881 36 701	25	G 1/8	128

ADJUSTABLE VACUUM SWITCH

The vacuum switch is used to check the presence of vacuum (REED switch).

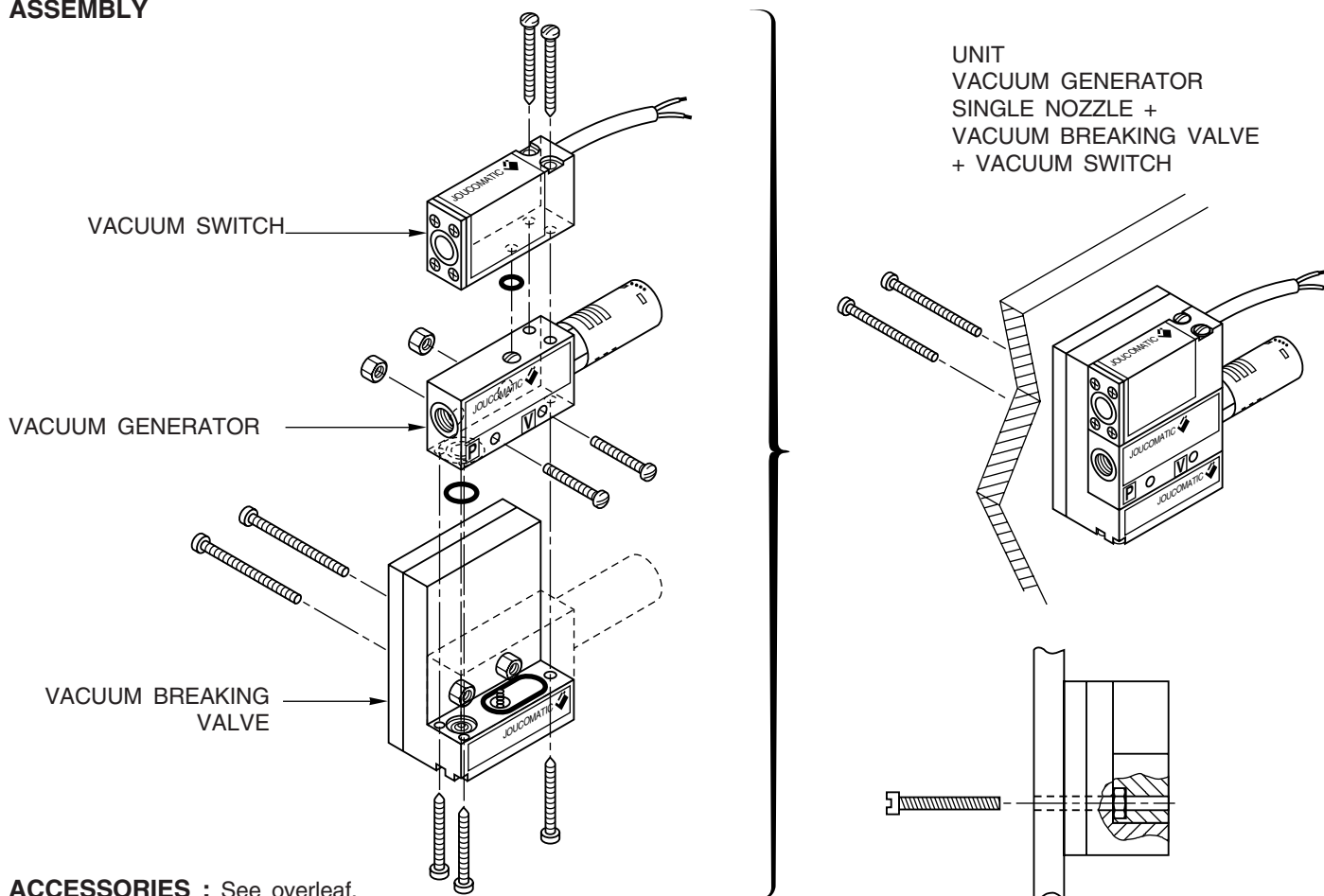
CODE	Adjustment range (mbar)	Max. power rating	Max. intensity	Connection	Mounting	Weight (g)
881 36 702	-260 to -800	~	100 V	10 mA	Output by 2 wires 20 cm long	Adjustable on vacuum generator
		=	24 V	30 mA		

The vacuum switch is preset at - 650 mbar

VACUUM GENERATOR UNIT + VACUUM BREAKING VALVE + VACUUM SWITCH

CODES	Ø nozzle (mm)	Max. exhaust volume (at 5 bar) (l/min - ANR)	Air consumption at 5 bar (l/min - ANR)	Ultimate vacuum pressure (mbar)	Vacuum switch adjustable range (mbar)	Weight (g)
367 00 010	0.5	6	11	- 920	- 260 / - 800	223
367 00 011	1	29	44			
367 00 012	1.3	46	78			

ASSEMBLY



ACCESSORIES : See overleaf.

ACCESSORIES :

VACUUM FILTER

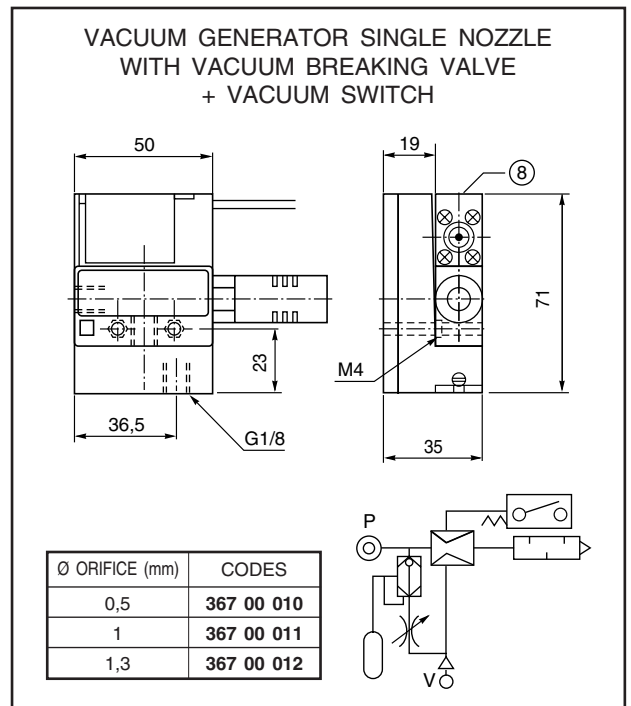
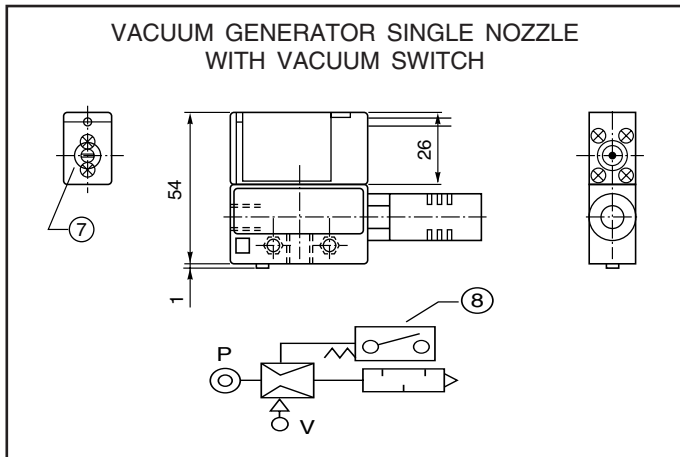
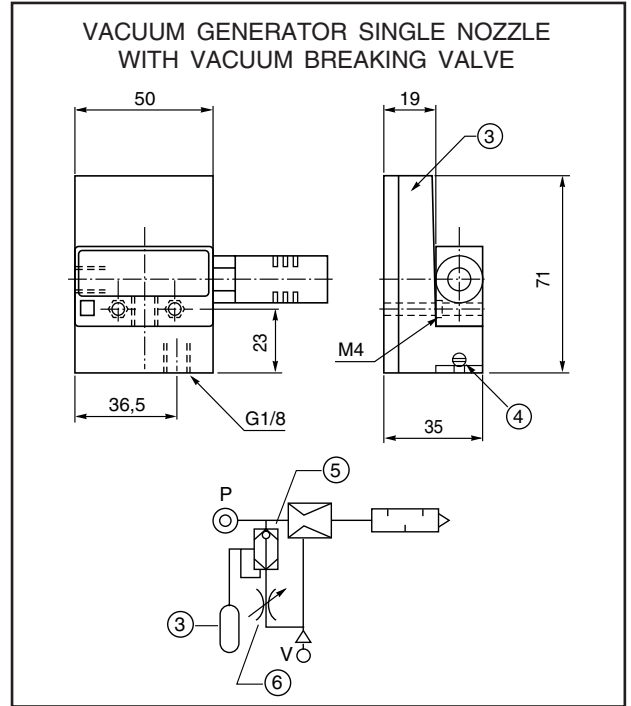
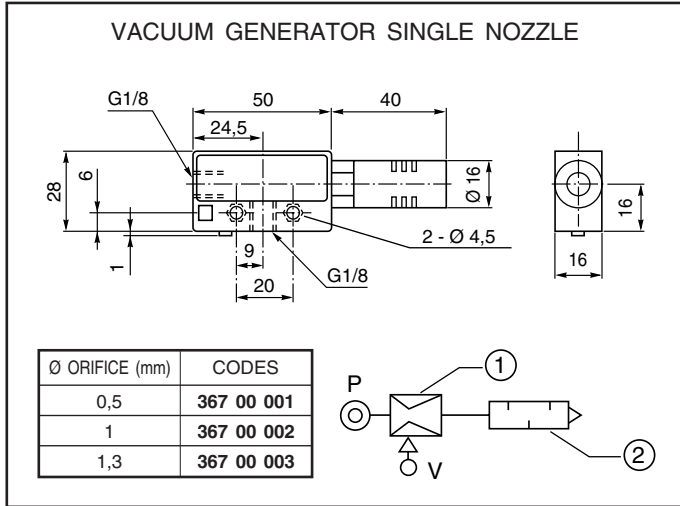
This accessory is recommended for a vacuum lifting system operating in dusty environment in order to maintain the performance of the vacuum generator. This filter **cannot be integrated into the unit** and must be placed between the vacuum generator and the suction cup.

CODE	Filtering performance (µm)	Filter material	Port size		Weight (g)
			Generator side	Cup side	
881 36 703	30	Paper	G 1/8	G 1/4	65

VACUUM GAUGE : 0 to -1 bar, Ø 50 mm, with rear centre back connector G 1/8, code : **346 00 353**

VACUUM SWITCH : available in two versions : **tapped** with G 1/4 or bracket connections, with adjustable pressure from 0 to -1 bar (see pages 27 - 28).

DIMENSIONS



- ① GENERATOR
- ② SILENCER
- ③ RESERVOIR
- ④ FLOW CONTROL SCREW
- ⑤ SHUTTLES VALVE
- ⑥ VACUUM BREAKING VALVE REDUCER
- ⑦ VACUUM ADJUSTING SCREW
- ⑧ VACUUM SWITCH