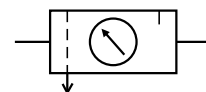


Series 342
Maxi range

FILTER, REGULATOR AND LUBRICATOR SYSTEM

G 3/4 and G 1

Air service equipment



OVERALL SPECIFICATION

FLUID	: Compressed air or neutral gas
PORTS	: G 3/4 and G 1
MAX. INLET PRESSURE	: 16 bar at 23°C or 10 bar at 50°C
MAX. FLOW (Q _v at 6.3 bar)	: 7000 to 8400 l/min (ANR)
BOWL CAPACITY	: 30 and 50 cl
FILTERING CAPACITY	: 50 µm
CONTROLLED PRESSURE	: 0.5-10 bar
AUTOMATIC OR SEMI-AUTOMATIC DRAIN	
SELF-RELIEVING REGULATOR	
LUBRICATION	: Selective oil fog

CONSTRUCTION

Zamak body
Polyethylene (P-E) filtering element
Polycarbonate (PC) bowl
Pipable semi-automatic drain (closes to air flow)
Pipable automatic drain (operating pressure 2 to **10 bar** maxi.)
with plastic bowl, metal bowl or with protector
Also features manual and semi-automatic drain functions
Piston-type regulating device
Knob for adjustment of downstream pressure with locking device
Oil flow sight glass



INSTALLATION - MAINTENANCE

Systems must be installed with the bowls in vertical position

Air flow direction indicated by arrow

Type of oil recommended: non-detergent and without aggressive additives, viscosity **VG32** (ISO 3448)

Use an alkaline solution (soapy water) and not a solvent for cleaning the polycarbonate bowls and sight domes.

CHOICE OF EQUIPMENT

Maxi. range: consisting of three components (filter, regulator and lubricator). Due to their size, the components of this range are supplied disconnected with two assembly bosses.

Port size	Range	Bowl capacity (cl)	Filtering capacity (µm)	Controlled pressure (bar)	Flow (ANR) at 6.3 bar pressure setpoint and ΔP of 1 bar / setpoint				CODE			
					min. (1)		max.		Semi-automatic drain		Automatic drain	
					(l/min)	(dm ³ /s)	(l/min)	(dm ³ /s)	WITH pressure gauge (0-12 bar)	WITHOUT pressure gauge	WITH pressure gauge (0-12 bar)	WITHOUT pressure gauge
Polycarbonate bowl without protector												
G 3/4	MAXI 30	30	50	0,5 - 10	900	15	7000	120	34200058	34200057	34200089	34200153
G 1	MAXI 50	50	50	0,5 - 10	1500	25	8400	140	34200060	34200059	34200359	34200358

(1) Minimum for lubricator startup

ACCESSORIES

Description	CODE	
	Maxi 30	Maxi 50
Component assembly kit	97800178	97800179
50 mm dia., 0-12 bar pressure gauge (standard)	34200062	34200062

OPTIONS

- Bowl protector (with semi-automatic drain):

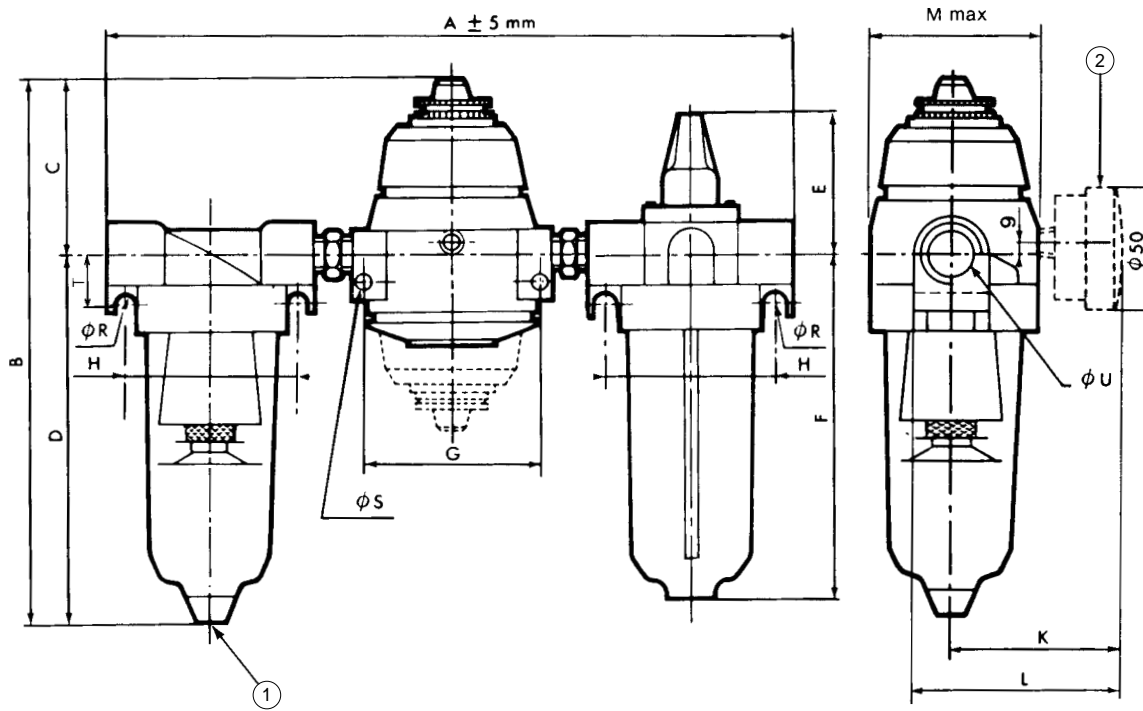
Range	Maxi 30	Maxi 50
For filter	662504	662506
For lubricator	662505	662507

- Automatic drain on bowl protector for Maxi 30 or 50
- Metal bowl with manual drain for Maxi 30 or 50
(maximum inlet pressure in filter/regulator: 16 bar as standard, 25 bar as option, consult us)
- Automatic drain on metal bowl (operating pressure: 2 to 10 bar) for Maxi 30 and 50, code: **662522**
- Filtering capacity of 5 µm Maxi 30, code: **662511** - Maxi 50, code: **662514**

Series 342

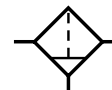
DIMENSIONS AND WEIGHTS

MAXI RANGE



- ① Drain connection:
- Semi-automatic : G 1/8 thread
 - Automatic : nipple for 6 mm ID flexible tubing
 - Manual : non-pipable
- ② Pressure gauge

ØU	Maxi	
	G 3/4	G 1
Bowl	30 cl	50 cl
A	311	396
B	264,5	276,5
C	95	99,5
D	170	177
E	60	85
F	158,5	170
G	85	85
H	85	113
K	68	72
L	114	126
M	92	108
ØR	8,5	8,5
ØS	6,2	6,2
T	21	26
Weight kg	3,150	5,900



OVERALL SPECIFICATION

FLUID : Compressed air or neutral gas
 PORTS : G 3/4 to G 1 1/2
 MAX. PRESSURE : 16 bar at 23°C or **10 bar at 50°C**
 AMBIENT TEMPERATURE : 0°C to + 50°C
 MAX. FLOW (Qv at 6.3 bar) : 12000 to 24000 l/min (ANR)
 BOWL CAPACITY : 30 to 75 cl
 AUTOMATIC OR SEMI-AUTOMATIC DRAIN

CONSTRUCTION

Filtering capacity: 50 µm (G 3/4 to G 1 1/4) - 80 µm (G 1 1/2)
 Polyethylene (P-E) filtering element
 Zamak body
 Polycarbonate (PC) bowl
 Pipable semi-automatic drain (operating pressure: 1.2 to 10/16 bar)
 Pipable automatic drain (operating pressure: 2 to **10 bar** maxi.)
 with plastic bowl, metal bowl or with protector
 The automatic drain also performs manual and semi-automatic drain functions.



INSTALLATION - MAINTENANCE

Systems must be installed with the bowls in vertical position
 Air flow direction indicated by arrow
Use an alkaline solution (soapy water) and not a solvent for cleaning the polycarbonate bowls.

CHOICE OF EQUIPMENT

Port size	Range	Bowl capacity	Filtering capacity	Maximum flow (at 6.3 bar / ΔP of 1 bar)		CODE	
						FILTER	
						Semi-automatic drain	Automatic drain
(cl)	(µm)	l/min (ANR)	dm³/s (ANR)				
Polycarbonate bowl without protector							
G 3/4	MAXI 30	30	50	12000	200	34200007	34200064
G 1	MAXI 50	50	50	14000	235	34200008	34200065
G 1 1/4	MAXI 50	50	50	18000	300	34200272	34200383
G 1 1/2	MAXI 75	75	80	24000	400	34200271	34200384

ACCESSORIES

Description	CODE	
	Maxi 30 (G 3/4)	Maxi 50 (G 1)
Component assembly kit	97800178	97800179

OPTIONS

- Bowl protector (with semi-automatic drain):

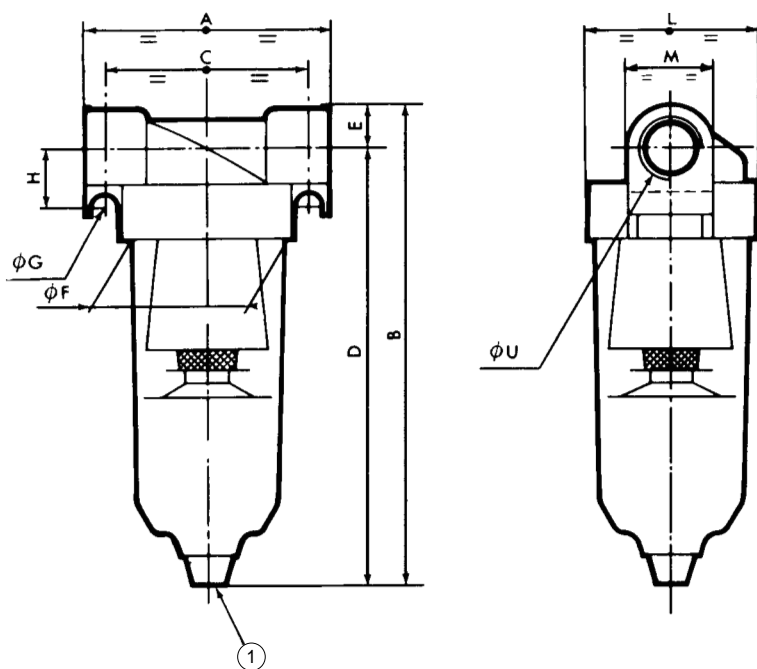
Maxi 30	662504
Maxi 50 (G1)	662506
Maxi 50 (G1 1/4)	662516
Maxi 75	662512

- Automatic drain on protector for Maxi 30, 50 and 75
- Metal bowl with manual drain for Maxi 30, 50 and 75 (Maximum pressure: 25 bar)
- Automatic drain on metal bowl (operating pressure: 2 to 10 bar) Maxi 30, 50 and 75, code: **662522**
- Filtering capacity 5 µm Maxi 30, code: **662511** - Maxi 50, code: **662514** - Maxi 75, code: **662515**

Series 342

DIMENSIONS AND WEIGHTS

MAXI RANGE



① Drain connection:

- Semi-automatic : G 1/8 thread
- Automatic : nipple for 6 mm ID flexible tubing
- Manual : non-pipable

	Maxi 30	Maxi 50		Maxi 75
ØU	G 3/4	G 1	G1 1/4	G1 1/2
Bowl	30 cl	50 cl	50 cl	75 cl
A	98	130	130	160
B	186	201	211	277
C	85	113	113	130
D	169	178	183	237
E	17,5	23	28	30
ØF	67	99	95	95
ØG	8,5	8,5	8,5	8,5
H	21	26	35	35
L	77	100	100	114
M	35	46	56	65
Weight kg	0,690	1,400	1,080	1,800

Series 342 Maxi range

REGULATOR G 3/4 and G 1

Air service equipment



SPECIFICATION

FLUID : Compressed air or neutral gas
 PORTS : G 3/4 and G 1
 MAX. INLET PRESSURE : 16 bar
 STANDARD ADJUSTMENT RANGE : 0.5 - 10 bar
 AMBIENT TEMPERATURE : 0°C to +50°C
 MAX. FLOW (Qv at 6.3 bar) : 7000 to 8400 l/min (ANR)
 SELF-RELIEVING REGULATOR

CONSTRUCTION

Piston-type regulating device, servo-controlled mechanism
 Nitrile (NBR) core
 Zamak body
 Adjustment knob with locking device

INSTALLATION

Regulators can be installed in any position
 Air flow direction indicated by arrow



CHOICE OF EQUIPMENT

Port size	Range	Max. inlet pressure	Controlled pressure	Maximum flow at 6.3 bar pressure setpoint and ΔP of 1 bar / setpoint				CODE	
								REGULATOR	
				(bar)	(bar)	l/min (ANR)	dm³/s (ANR)	WITH pressure gauge (0-12 bar)	WITHOUT pressure gauge
G 3/4	MAXI 30	16	0,5 - 10	7000	120	34200022	34200021		
G 1	MAXI 50	16	0,5 - 10	8400	140	34200024	34200023		

ACCESSORIES

Description	CODE	
	Maxi 30	Maxi 50
Component assembly kit	97800178	97800179
50 mm dia., 0-12 bar pressure gauge (standard)	34200062	34200062

OPTIONS

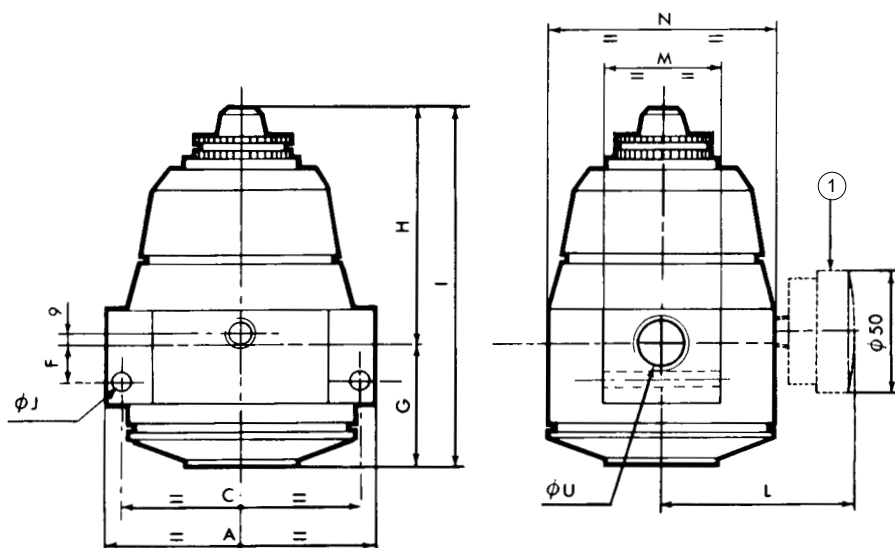
- 0 to 20 bar adjustment range
- Ø 50, 0-25 bar pressure gauge, code: **34200063** } for Maxi 30 and Maxi 50 ranges (max. inlet pressure: 25 bar)



Series 342

DIMENSIONS AND WEIGHTS

MAXI RANGE



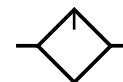
	Maxi	
	30	50
ØU	G 3/4	G 1
A	95	95
C	85	85
F	21	25,5
G	45	49,5
H	95	99,5
I	140	149
ØJ	6,2	6,2
L	68	72
M	35	40
ØN	77	77
Weight kg	1,650	1,950

① Pressure gauge

Series 342 Maxi range

LUBRICATOR G 3/4 to G 1 1/2

Air service equipment



SPECIFICATION

FLUID	: Compressed air or neutral gas
PORTS	: G 3/4 to G 1 1/2
MAX. PRESSURE	: 12 bar at 23°C or 10 bar at 50°C
AMBIENT TEMPERATURE	: 0°C to + 50°C
MAX. FLOW (Qv at 6.3 bar)	: 14000 to 20000 l/min (ANR)
BOWL CAPACITY	: 30 to 75 cl
TYPE OF LUBRICATION	: Selective oil fog

CONSTRUCTION

Zamak body
Polycarbonate (PC) bowl
Oil flow sight glass
Oil flow adjustment direction indicated by arrow



INSTALLATION - MAINTENANCE

Lubricators must be installed with the bowl in vertical position
Air flow direction indicated by arrow
Lubricator oil refilling unpressurised/pressurised, via filler plug
Oil flow adjustable with lubricator in service
Type of oil recommended: non-detergent and without aggressive additives, viscosity **VG32** (ISO 3448)
Use an alkaline solution (soapy water) and not a solvent for cleaning the polycarbonate bowls and sight domes.

CHOICE OF EQUIPMENT

Pipe size	Range	Bowl capacity (cl)	Max. oil capacity (cl)	Flow at 6.3 bar (ANR)				CODE
				min. (1)		max.		LUBRICATOR
				(l/min)	(dm ³ /s)	(l/min)	(dm ³ /s)	
Polycarbonate bowl without protector								
G 3/4	MAXI 30	30	20	900	15	14000	235	34200031
G 1	MAXI 50	50	40	1500	25	16000	270	34200032
G 1 1/4	MAXI 50	50	40	3500	58	20000	335	34200279
G 1 1/2	MAXI 75	75	55	5000	83	20000	335	34200280

(1) Minimum for lubricator startup

ACCESSORIES

Description	CODE	
	Maxi 30 (G 3/4)	Maxi 50 (G 1)
Component assembly kit	97800178	97800179

OPTIONS

• Bowl protectors:

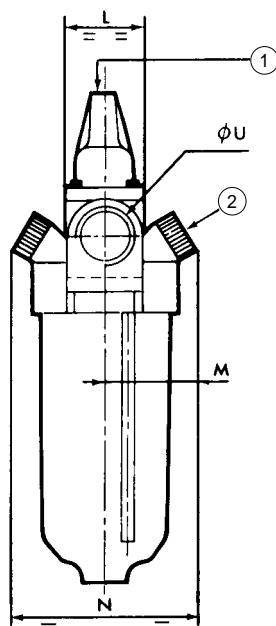
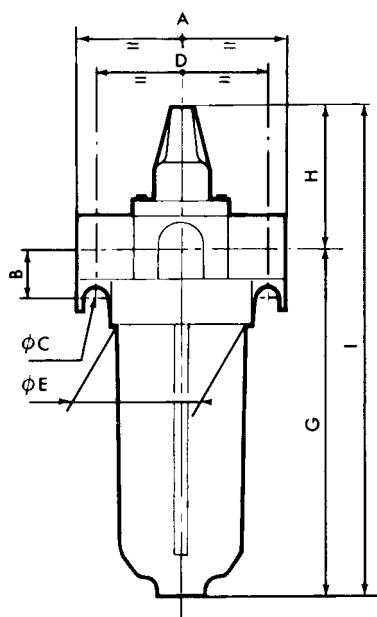
Maxi 30	662505
Maxi 50 (G1)	662507
Maxi 50 (G1 1/4)	662517
Maxi 75	662513

• Metal bowl for Maxi 30, 50 and 75 (maximum pressure: 12 bar)

Series 342

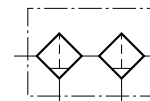
DIMENSIONS AND WEIGHTS

MAXI RANGE



	Maxi 30	Maxi 50		Maxi 75
ØU	G 3/4	G 1	G 1 1/4	G 1 1/2
Bowl	30 cl	50 cl	50 cl	75 cl
A	98	130	130	130
B	21	35	35	35
ØC	8,5	12	12	12
D	85	113	113	113
ØE	72	95	95	95
G	158,5	170	172	237
H	60	85	85	85
I	218,5	255	257	322
L	35	63	63	63
M	46	54	54	54
N	92	108	108	108
Weight kg	0,810	2,490	2,080	2,455

- ① Oil flow adjustment
- ② 2 filler plugs



UTILISATION

CLARIFIAIR systems are used to obtain high level of filtration:

- of solid particles (0.01 µm),
- aerosols of oil and water (0.01 ppm).

SPECIFICATION

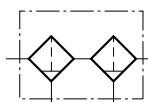
FLUID	: Compressed air or neutral gas
PORTS	: G 3/4 and G1
WORKING PRESSURE	: 12 bar max.; 2 to 10 bar (with automatic drain)
WORKING TEMPERATURE	: +1.5°C ; +50°C
MAX. FLOW (Qv at 6.3 bar)	: 1400 - 1800 l/min (ANR)
BOWL CAPACITY	: 50 cl - 75 cl
FILTERING CAPACITY	: 0.01 µm
DRAINS	: Automatic or semi-automatic



COMPOSITION OF SYSTEMS

PREFILTER + SUBMICRON FILTER SYSTEM

Consisting of a prefilter with 5 µm capacity and a submicron filter with 0.01 µm capacity



CONSTRUCTION

■ PREFILTER (5 µm)

- Zamak body
- Polyethylene (P-E) 5 µm filtering element

■ SUBMICRON FILTER (0.01µm)

- Zamak body
- 0.01µm coalescent filtering element

■ ALL MODELS

- Polycarbonate (PC) bowls equipped depending on the version with semi-automatic drains (1.2 to 10/12 bar) or automatic drains (operating pressure 2 to **10 bar max.**).

INSTALLATION - MAINTENANCE

Systems must be installed with the bowls in vertical position

Air flow direction indicated by arrow

Use an alkaline solution (soapy water) and not a solvent for cleaning the polycarbonate bowls.

CHOICE OF EQUIPMENT

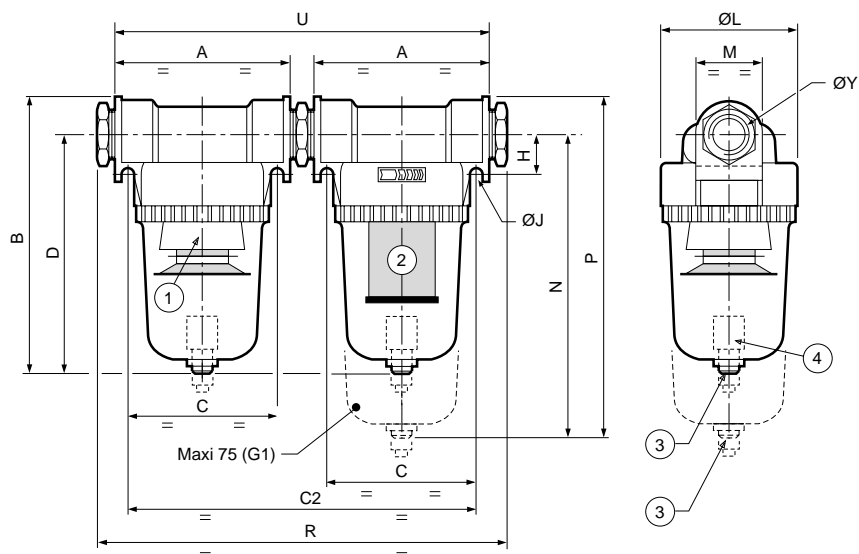
Port size	Range	Bowl capacity	Max. flow (ANR) at 6.3 bar max. ΔP: 0.350 bar		CODE	
					PREFILTER + SUBMICRON FILTER SYSTEM	
					With semi-automatic drains	With automatic drains
G 3/4	MAXI 50	50	l/min	dm ³ /s	34200331	34201718
G 1	MAXI 75	50/75	1400	23	34200332	34201719
			1800	30		

OPTIONS

- Systems with protectors equipped with automatic or semi-automatic drains
- Metal bowls with manual or automatic drains (operating pressure: 2 to 10 bar).
- Manual drains on all models (consult us)



MAXI RANGE PREFILTER + SUBMICRON FILTER SYSTEM



	MAXI 30	MAXI 50	MAXI 50/75
ØY	G 1/2	G 3/4	G 1
Bowl	30 cl	50 cl	50-75 cl
A	98	130	130
B	186	201	201
C	85	113	113
C2	199	259	259
D	169	178	178
H	21	26	26
ØJ	8,5	8,5	8,5
ØL	77	100	100
M	35	46	46
N	—	—	245
P	—	—	268
R	236	300	276
U	212	276	276
⚖ (kg)	2,160	2,590	3,040

- ① 5 µm filtering element
- ② 0.01 µm filtering element
- ③ **Drain connection**
 - Semi-automatic : G 1/8 thread
 - Automatic : nipple for 6 mm ID flexible tubing
 - Manual : non-pipable
- ④ Automatic drain: add 11 mm to dimensions B, D, N and P (Maxi 30, 50 and 75)