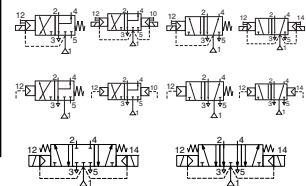




# SPOOL VALVES

pilot operated or air operated, spool type single/dual solenoid or air, aluminium body, "NAMUR" style, 1/4 to 1/2 stainless steel screws



3/2-5/2

Series 551

## FEATURES

- Spool valve protected against food and beverage environment thanks to stainless steel screws
- The solenoid operated spool valves have threaded port connections and NAMUR interface
- The same spool valve can be adapted for 3/2 NC or 5/2 functions for controlling double-acting and single-acting actuators
- All the exhaust ports of the spool valve are connectable, providing better environmental protection. Particularly recommended for sensitive areas, such as clean rooms, and applications in the pharmaceutical and food processing sectors
- The valves offer environmental protection against the ingress of liquids, dusts or other foreign matter (environmentally-protected construction)
- The solenoid valves satisfy all relevant EC directives

## GENERAL

Differential pressure 2 - 10 bar [1 bar = 100 kPa]  
Flow (Qv at 6 bar) 700 l/min (ANR)

fluids (*)	temperature range (TS)	seal materials (*)
air, inert gas, filtered	- 25°C to + 60°C	NBR (nitrile) + PUR (polyurethane)

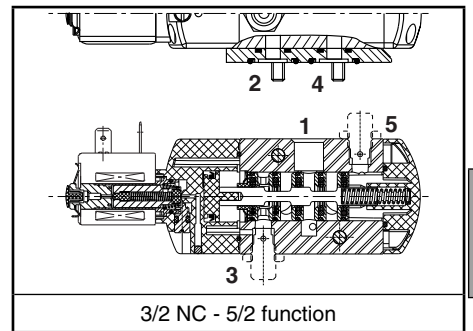
## MATERIALS IN CONTACT WITH FLUID

(\*) Ensure that the compatibility of the fluids in contact with the materials is verified

Body, end cover	Aluminium, black anodized
End cover (spring return)	PBT
Spool valve internal parts	stainless steel, POM, aluminium
Seals	NBR + PUR
Core and core tube	Stainless steel
Shading coil	Copper
Screws	Stainless steel 316L

## ELECTRICAL CHARACTERISTICS

Coil insulation class	F
Connector	Spade plug connector with cable outlet 2 m long
Connector specification	DIN 43650, 11 mm, industry standard B (type 01)
Electrical safety	IEC 335
Electrical enclosure protection	Moulded-in cable IP67 (EN 60529)
Standard voltages	DC (=): 24V - 48V
(Other voltages and 60 Hz on request)	AC (~): 24V - 48V - 115V - 230V / 50 Hz



3/2 NC - 5/2 function

prefix option	power ratings				operator ambient temperature range (TS) (C°)	replacement coil		type <sup>(1)</sup>
	inrush ~ (VA)	holding ~ (VA) (W)		hot/cold = (W)		~ 230 V/50 Hz	= 24 V DC	
		~ (VA)	~ (W)					
SC	6	3,5	2,5	2,5/3	-25 to + 60	43004886	43004869	01
SC	15	7	5	2,5/6,9	-25 to + 60	43004649	43004647	02

<sup>(1)</sup> Refer to the dimensional drawings on the following page.

## SPECIFICATIONS

pipe size	orifice size (mm)	flow coefficient Kv (m³/h) (l/min)		operating pressure differential (bar)			power coil (W)		catalogue number	options			
				min.	max. (PS)					maintained	man. operator		
					~	=							=
<b>3/2 NC - 5/2 - Solenoid air pilot operated - spring return (monostable)</b>													
1/4	6	0,6	10	2	10	10	2,5	3	SCG551A082MS	•	-	-	
<b>3/2 NC - 5/2 - Solenoid air pilot operated and return (bistable)</b>													
1/4	6	0,6	10	2	10	10	2,5	3	SCG551A084MS	•	-	-	

