

PRESENTATION

- G1/8 rear centre connection
- Fits all versions of regulators and filters/regulators

SPECIFICATIONS

FLUID : filtered air or neutral gas, lubricated or NOT
 PORT : R 1/8 tapered
 DIAMETER : 50 mm
 SCALE RANGE : see table below
 GRADUATIONS : bar and psi

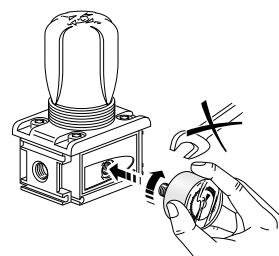
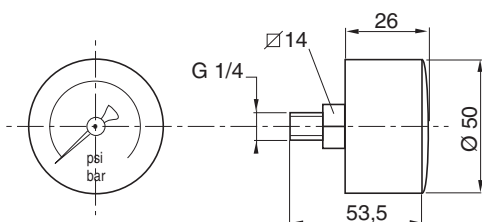
CHOICE OF EQUIPMENT

description	code
50 mm dia. press. gauge only 0 - 12 bar	34303242

Separate products and systems are also available in stock packages including pressure gauges

DIMENSIONS

Weight: 0,070 kg



Manual installation recommended.
 Make sure other unused ports are sealed off on installation

TWO-PART ASSEMBLY KITS STAINLESS STEEL FASTENERS

PRESENTATION

- This kit enables assembly of two components of the same range

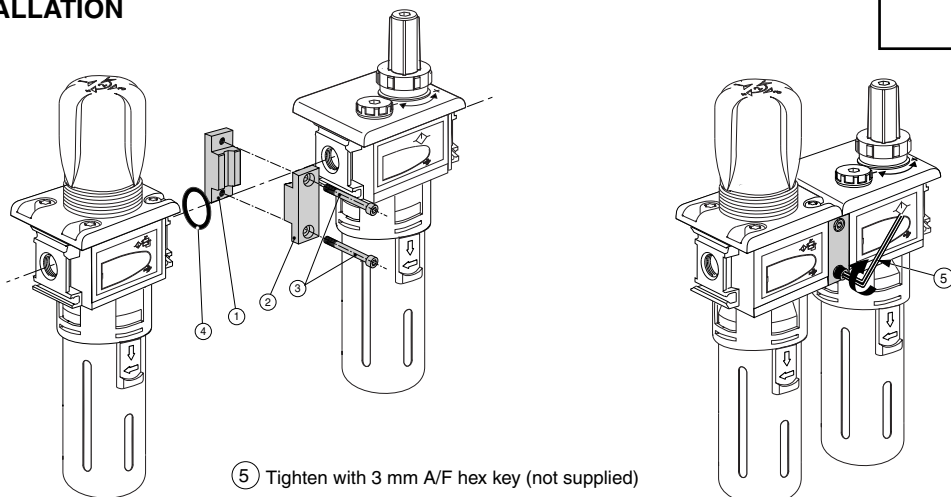
COMPOSITION

- 1 rear assembly yoke (holes tapped)
- 1 front assembly yoke (holes counterbored)
- 2 assembly screws
- 1 intercomponent seal

CHOICE OF EQUIPMENT

description	code
1 two-part assembly kit:	34303226

INSTALLATION



PRESENTATION

- Side mounting brackets are for surface mounting of any of the air treatment components, i.e. isolation valve, filter, regulator, filter/regulator, lubricator, shut-off valve and soft-start system, and Clarifair 0.01 µm filter system.

CONSTRUCTION

Brackets : stainless steel Retaining screws : stainless steel

CHOICE OF EQUIPMENT

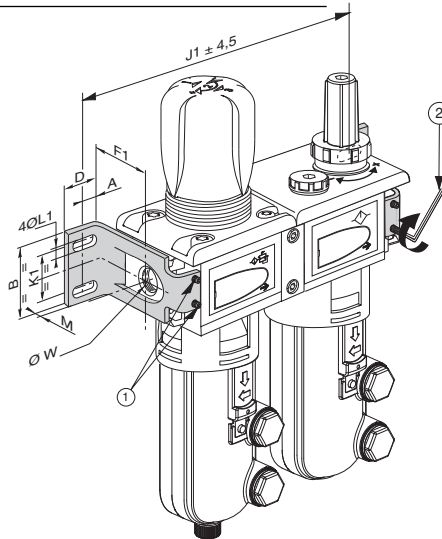
description	code
1 set of 2 side mounting brackets	34303227

DIMENSIONS

range	Modulair
	112
Ø W	G1/4 G3/8 G1/2
A	15
B	44
D	23
F1	46
J1	(1)
K1	33,5
Ø L1	5,5
M	4
Weight (kg) ⁽²⁾	0,190

(1) J1 = distance between fastening centres
(see following page)

(2) weight of 1 set of 2 brackets



- ① Pre-installed retaining screws
- 4 screws
- ② 2 mm A/F hex key (not supplied)

TOP MOUNTING RINGS AND BRACKETS STAINLESS STEEL

PRESENTATION

- The top mounting ring and bracket fit the filter/regulator and regulator. These accessories enable bulkhead-mounting of the components.
- The mounting ring can be used separately for panel mounting of a regulator.

CONSTRUCTION

Ring : Glass-fibre reinforced polyamide
Bracket : Stainless steel

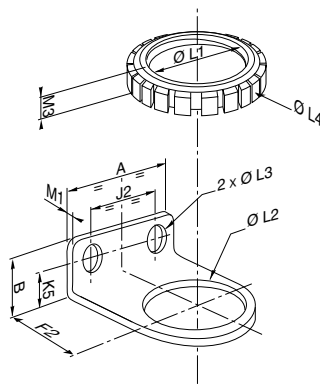
CHOICE OF EQUIPMENT

description	code
Top mounting ring	34300004
mounting bracket	34303241

DIMENSIONS

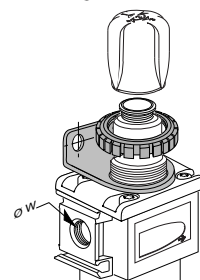
For regulators and filters/regulators with accessories installed:
refer to the corresponding pages

range	Modulair
	112
Ø W	G1/4 G3/8 G1/2
Bowl (cl)	12
A	45
B	20
F2	42
J2	29
K5	12
Ø L1	M 37 X 2
Ø L2	37,5
Ø L3	7
Ø L4	45
M1	2
M2	2
M3	6

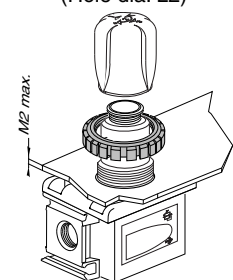


INSTALLATION

INSTALLATION WITH BRACKET AND RING



PANEL MOUNTING (Hole dia. L2)



Adaptation for Modulair 112

To mount the bracket and ring, remove the pressure control knob from the regulator or filter/regulator. The knob is a snap-on type and can be removed by pulling sharply upward. To remount, push it back on.

All leaflets are available on: www.asconumatics.eu

FR

GB

DE

Possibilité de constituer des ensembles de traitement de l'air par toute combinaison de produits et accessoires modulaires type 112. Ce tableau est destiné à définir rapidement l'entraxe des fixations frontale directe ou par équerres latérales des principaux ensembles constitués.

Rechercher la ligne correspondant à l'ensemble de votre application

All Modulair type 112 products and accessories can be combined to for air treatment systems. This table shows the distance between axes of fasteners with direct frontal mounting or mounting with side brackets.

Find the line corresponding to the system for your application

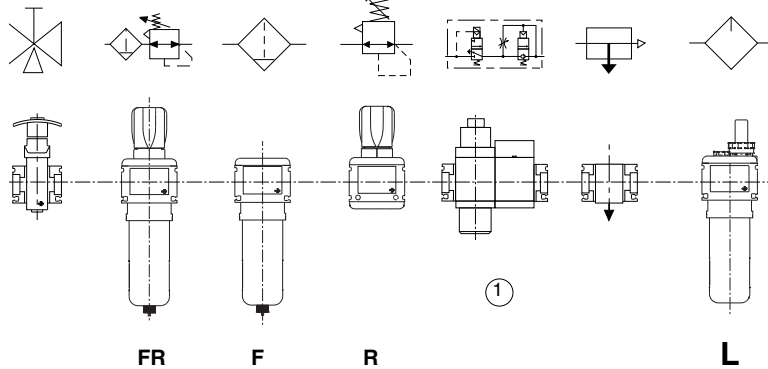
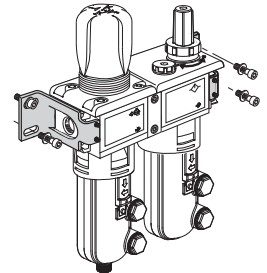
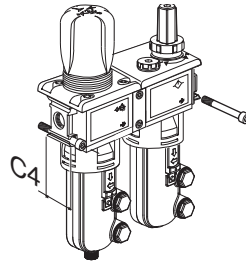
Einheiten für die Druckluftaufbereitung können aus den Geräten und dem Zubehör der Baureihe Modulair 112 beliebig zusammengestellt werden. Die Tabelle dient zur schnellen Ermittlung des Mittenabstands für die direkte Befestigung vorne oder die seitliche Befestigung mit Halte winkeln der wesentlichen Kombinationen.

Suchen Sie die Zeile, die der Gerätezusammenstellung für Ihre Anwendung entspricht.

● : produits sélectionnés ● : selected products ● : gewähltes Gerät

fixation frontale directe
direct frontal mounting
direkte befestigung vorne

fixation par équerres latérales
mounting with side brackets
seitliche befestigung mit haltewinkeln



FR	F	R	L	MODULAIR 112 (2)	MODULAIR 112 (3)
●				123	162
●			●	281	320
●				189	228
●			●	347	386
●			●	281	320
●	●			181	220
●	●		●	339	378
●	●			247	286
●	●		●	405	444
●	●		●	339	378
	●			123	162
	●	●		189	228
	●	●	●	347	386
	●	●		255	294
	●	●	●	413	452
●	●			181	220
●	●	●		247	286
●	●	●	●	405	444
●	●	●		313	352
●	●	●	●	471	510
●	●	●		181	220
●	●	●	●	339	378

① Ensemble compact vanne de coupure + démarreur progressif
Compact shut-off valve + soft-start system
Kompakteinheit aus Stoppventil + progressivem Anfahrventil

② 2 Ø 5,5 prof. / depth / Tiefe C4: 47,5

③ 4 Ø 5,5 épaisseur / thickness / Dicke = 4, K1 = 33,5

(en mm)
(in mm)