

GENERAL

FLUID	: Air or neutral gas, filtered, lubricated or not
PRESSURE	: 2 to 10 bar
TEMPERATURE	: - 10°C, + 60°C
FLOW (Qv at 6 bar)	: see table below
PILOT PRESSURE	: in external supply, the pilot pressure must be equal or superior to the pressure in the valve

CONSTRUCTION

Body: light alloy
 Sealings: polyurethane (PUR) and nitrile (NBR)
 Mating surface to CNOMO 06-05-81/82 and AFNOR NF E49067/068
 Internal parts: steel, light alloy and acetal resin (POM)



ELECTRICAL CHARACTERISTICS OF PILOTS

Type of sol. valve		Voltages	Consumption		Insulation class	Protection degree	Electrical connection
			Inrush	Hold			
Series 189	~	24V - 48V - 115V - 230V / 50 Hz	6VA	3,5VA(2,5W)	F	IP 65	spade plug size 22 connector, DIN 43650, 11 mm, industry standard B, rotatable by 180°
	=	24V - 48V	2,5W				
Series 190	~	24V - 48V - 115V - 230V / 50 Hz	9VA	4VA(3W)	F	IP 65	spade plug size 30 connector, ISO4400/EN175301-803, form A, rotatable by 90°
	=	24V - 48V	3W				

The solenoid valve 190 is dual-voltage (24V~,12V=) (48V~,24V=) (115V~,48V=) (230V~, 115V=)

SPECIFICATIONS

Pipe size	Orifice size (mm)	Flow		Fluid pressure (in bar)		Function	2 catalogue numbers		(M)	Reference	
		at 6 bar l/min (SRA)	KV coefficient	min.	max.		VALVE	PILOT with standard connector			
Subbase-mounted 1/4"	8	700	10	2	10	NC	26190067	+	18900001	●	G/DMP 301/O
								+	19000005	×	
						NO	26190068	+	19000006	●	G/DMP 301/F
								+	19000017	▼	
Subbase-mounted 3/8"	12	1750	25	2	10	NC	26290352	+	18900001	●	G/DMP 302/O
								+	19000005	×	
						NO	26290353	+	19000006	●	G/DMP 302/F
								+	19000017	▼	

(M) Type of manual operator on pilot(s): X : without ● : maintained ▼ : impulse

SUBBASES

Valve mating surface	DESIGNATION			catalogue number	Reference
	Type of subbase	Pipe size	Type of port		
CNOMO 06.05.81 AFNOR E49067 G 1/4	SINGLE *	G 1/4	side	35300049	—
	JOINABLE *	G 1/4	side	35300057	—
CNOMO 06.05.82 AFNOR E49068 G 3/8	SINGLE	G 3/8	side	35700002	P/DMP 302
	JOINABLE	G 3/8	bottom	35700010	PJ02/DMP 302

* These subbases can be directly mounted on symmetrical EN 50022 - AFNOR NF C63015 standard rail using 1 mounting clip (clips sold in packets of 10 - cat no. 33400036).

OPTIONS

- Solenoid pilot valves 189-190-192 with connector and built-in visual indicator and protection (see pages P509, P510, P512)
- Solenoid pilot valve 189 with explosion-proof EEx"m" coil
- Solenoid head for dusty explosive atmospheres (DU), zone 22
- External solenoid valve supply plate, cat no.: 88122201 (G 1/8)

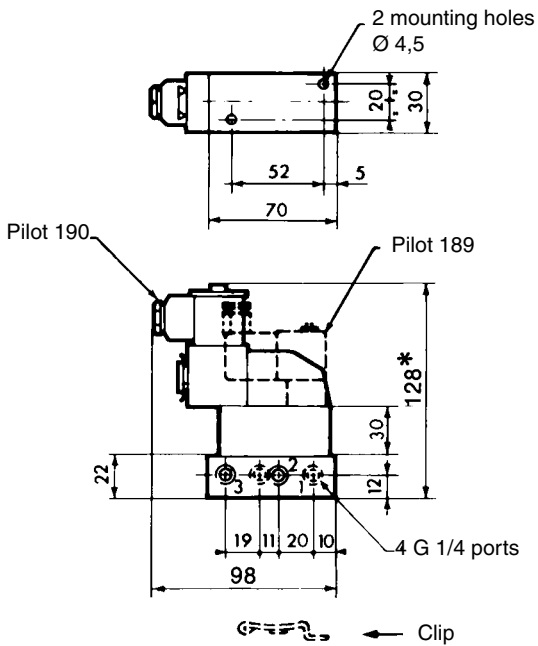
00432GB-2009/R01 Availability, design and specifications are subject to change without notice. All rights reserved.

E

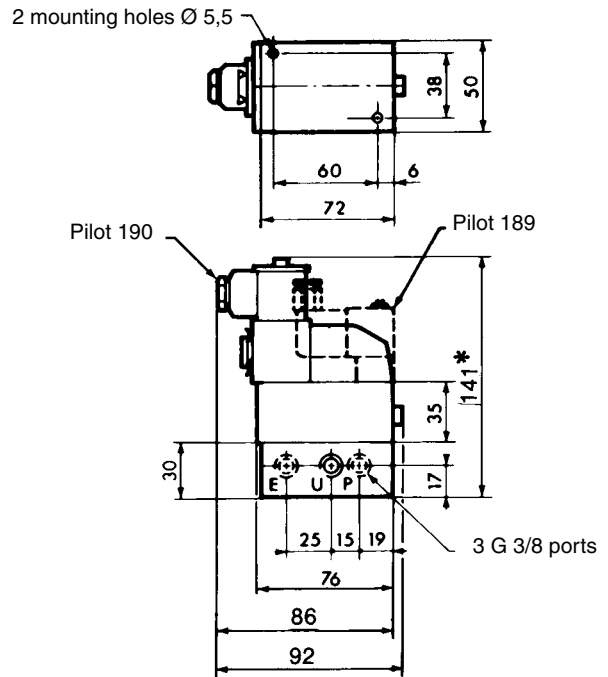
DIMENSIONS AND WEIGHTS

VALVE ON SINGLE SUBBASE

G 1/4 ports
Subbase: cat no. **35300049**
Weight: 0,450 kg



G 3/8 ports
Subbase: cat no. **35700002**
Weight: 0,800 kg



VALVE ON JOINABLE SUBBASE

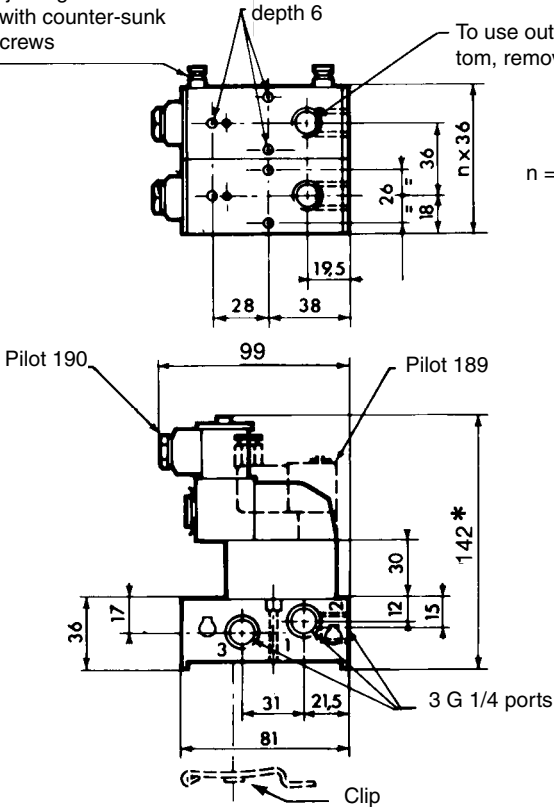
G 1/4 ports
Subbase: cat no. **35300057**
Weight: 0,500 kg

Joinable subbases assembled with joining units and secured with counter-sunk locking screws

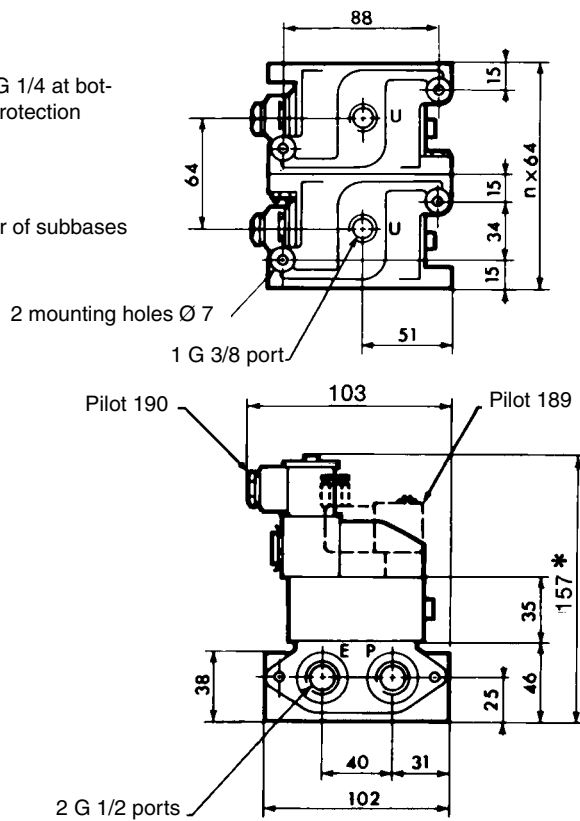
3 mounting holes Ø4,5, counter-bore Ø 7,5, depth 6

To use outlet "2" G 1/4 at bottom, remove the protection

n = number of subbases



G 3/8 ports
Subbase: cat no. **35700010**
Weight: 0,800 kg



* + 15 mm for connector removal

+ 16 mm for external solenoid valve supply plate