

GENERAL

Detection	Equipped for magnetic position detectors
Fluid	Air or neutral gas, filtered, lubricated or not
Operating pressure	10 bar max.
Ambient temperature	-20°C, to +70°C (for higher t°, see page P239)
Optimal max. speed	≤ 1 m/s (for optimal service life)
Max. speed rate	2 m/s
Standards	ISO 15552-AFNOR NF ISO 15552-DIN ISO 15552 (replace ISO 6431-AFNOR NFE 49003-VDMA 24562)

CONSTRUCTION

Barrel	Non magnetic hard anodized aluminium alloy
Tie rods	Stainless steel (Ø 32-100), paint steel (Ø 125-200)
Rod	Hard chrome plated steel
Piston	Ø 32 to 80 mm POM (polyacetal) Ø 100-125 mm light alloy fitted with a permanent annular magnet
Piston seal	PUR (polyurethane)
Cushioning seals	PUR (polyurethane)
Front and rear ends	Aluminium alloy
Bearing	Metal self lubricating
Rod nut	Galvanized steel
Cushioning	Pneumatic, adjustable from both sides with captive screws



B

SPECIFICATIONS

Ø (mm)	catalogue number	reference	max. stroke capability (mm)	connection Ø	cushioning length (mm)
32 (2)	45050784 (1)	PES 32 A (1) RDM - T2	300	G 1/8	18
40	45050785 (1)	PES 40 A (1) RDM - T2	400	G 1/4	20
50	45050786 (1)	PES 50 A (1) RDM - T2	500	G 1/4	26
63	45050787 (1)	PES 63 A (1) RDM - T2	500	G 3/8	26
80	45050788 (1)	PES 80 A (1) RDM - T2	600	G 3/8	27
100	45051022 (1)	PES 100 A (1) RDM - T2	600	G 3/8	33
125	45051023 (1)	PES 125 A (1) RDM - T2	600	G 3/8	37
160	45051024 (1)	PES 160 A (1) RDM - T2	600	G 1/2	55
200	45051025 (1)	PES 200 A (1) RDM - T2	600	G 1/2	55

- (1) Please specify stroke length (in mm) , compatible with the max. stroke capability.
The magnetic position detectors are ordered separately:
 - "T" model (see page P291), "COMPACT" model (see page P293), reed switch or magneto-resistive type
 - ATEX (see page X019-315 of ATEX catalogue)
 - "BIM" model, magneto-inductive (see page P297)
- (2) In the case of use of a BIM magnetic detector on PES series 450 Ø 32, it is necessary to add the option cat no.: **995125**

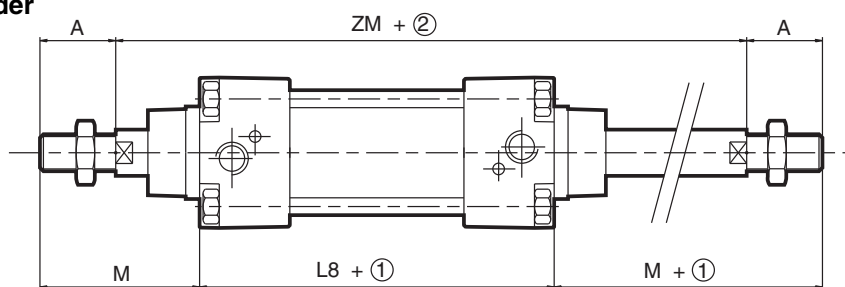
OPTIONS

- Other strokes on request
- Non cushioned (NA) version on request.
- Piston rod in 316L stainless steel, catalogue number: **995002** - in 303 stainless steel, catalogue number: **995202**
- Overlength piston rod in hard chrome steel, cat. n°: **995003** - in 316L stainless steel, cat. n°: **995004** - in 303 stainless steel, cat. n°: **995204**
- Type PES cylinders with tie-rods are available in versions for use in potentially **explosive dust or gas atmospheres** according to Directive 94/9/EC.
 Classification : II3GD c - Ta 40°C T85°C (T6) - Ta 70°C T100°C (T5) (ZONE 2-22) - cat no.: **612013**
 II2GD c - Ta 40°C T85°C (T6) - Ta 70°C T100°C (T5) (ZONE 1-21) - cat no.: **612016**

MOUNTINGS (see Fluid Power catalogue page P242 or ATEX catalogue page X019-312)

DIMENSIONS (mm), WEIGHT (kg)

Bare cylinder



- ① Stroke
 ② 2 x stroke

Ø	A	L8	M	ZM
32	22	94	48	146
40	24	105	54	165
50	32	106	69	180
63	32	121	69	195
80	40	128	86	220
100	40	138	91	240
125	54	160	119	290
160	72	180	152	340
200	72	180	167	370

Dimensional tolerances according to standard ISO 15552

00337GB-2009/R01 Availability, design and specifications are subject to change without notice. All rights reserved.