

GENERAL

Fluid Air or neutral gas, filtered at 5µm, lubricated or not
Operating pressure min. 3.5 (3 bar for Ø 6 mm)
 max. 8 bar
Ambient temperature + 5°C to + 60°C

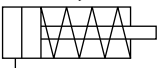
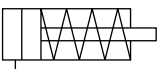
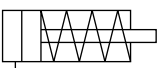
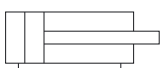
CONSTRUCTION

Tube Nicked brass
Piston seals NBR (nitrile)
Rod Acier inoxydable
Spring (single acting) Acier
Supplied with 2 rod-nuts



B

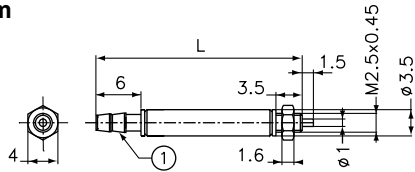
SPECIFICATIONS

Ø (mm)	stroke (mm)	weight (kg)	connection Ø	operating pressure (bar)		min. force at 8 bar (N)	extend force (N)		catalogue number
				min.	max.		min.	max.	
 2,5	5	0,0015	hose for 2mm int.-dia. tube	3,5	8	2,5	0,65	1,2	43500460
	10	0,0019					0,65	1,2	43500461
 4	5	0,0034	hose for 2mm int.-dia. tube	3,5	8	7	1,5	2,9	43500462
	10	0,0044					1,5	2,9	43500463
	15	0,0052					1,5	2,9	43500464
	20	0,0061					1,5	2,9	43500465
 6	5	0,010	M3 tapped type	3	8	17	3,0	5,3	43500466
	10	0,012					2,9	5,3	43500467
	15	0,015					2,9	5,3	43500468
	20	0,018					2,9	5,3	43500469
	25	0,021					3,0	5,3	43500470
 6	5	0,010	M3 tapped type	3	8	22	-	-	43500500
	10	0,012					43500501		
	15	0,015					43500502		
	20	0,018					43500503		
	25	0,021					43500504		

00320GB-2005/R01
 Availability, design and specifications are subject to change without notice. All rights reserved.

DIMENSIONS (mm), WEIGHT (kg)

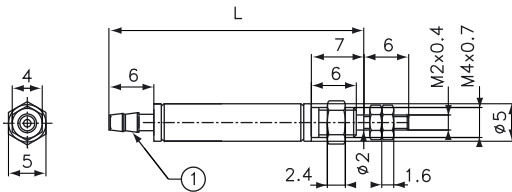
Ø 2,5 mm



Scale 1

stroke	L	weight
5	27,5	0,002
10	34	0,003

Ø 4 mm

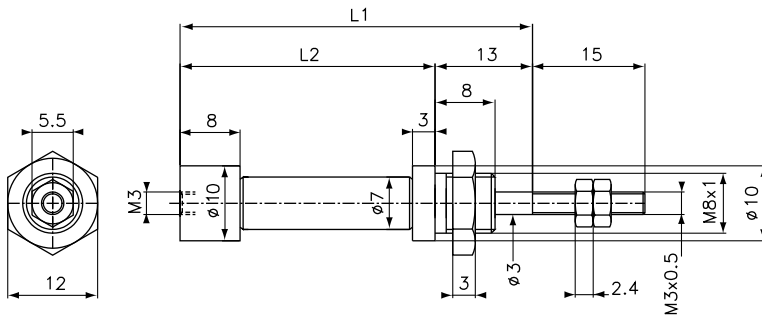


Scale 1

stroke	L	weight
5	34	0,004
10	40	0,005
15	47	0,006
20	52	0,007

① Hose for flexible tube in. Ø 1,8 or 2 mm

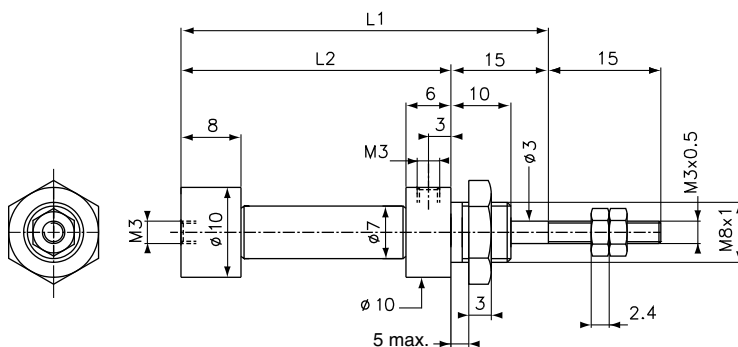
Ø 6 mm - single acting



Scale 1

stroke	single acting		double acting		weight
	L1	L2	L1	L2	
5	47	34	49	34	0,020
10	52	39	54	39	0,021
15	58	45	59	44	0,022
20	65	52	64	49	0,024
25	73	60	69	54	0,026

Ø 6 mm - double acting



Scale 1