

**PRESENTATION**

- This automatic soft-start, solenoid air operated monobloc unit provides two main functions:
  - **pneumatic system venting**
  - **gradual pressurisation** after an outage leading to venting of the system

**SPECIFICATION**

FLUID : Compressed air or neutral gas, filtered, lubricated or unlubricated  
 PORTS : G3/4 to G1 1/2  
 OPERATING PRESSURE : 2 to 16 bar  
 MAX. FLOW (Qv at 6,3 bar) G3/4 : 10500 l/min. (ANR)  
 G1- G1 1/4 - G1 1/2 : 12000 l/min. (ANR)  
 OPERATING TEMPERATURE : 0°C, +50°C (+ 60°C at 12,5 bar)  
 PILOT AND RETURN : pneumatic + spring

**CONSTRUCTION**

Body : aluminium  
 Internal parts : light alloy and brass  
 Seals : nitrile (NBR)



**CHOICE OF EQUIPMENT**

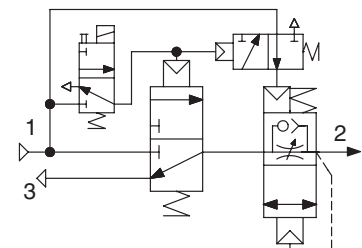
description	port size (1)	shut-off valve + soft-start unit	code		(M)
			+	solenoid valve	
3/2 NC shut-off valve and automatic soft-start system, <b>solenoid air</b> operated (without silencer)	G 3/4	<b>34397006</b>	+	1x <b>19200009</b> (3/2 NC)	▼
	G 1	<b>34397007</b>	+	or	
	G 1 1/4 (2)	<b>34397008</b>	+	1x <b>19200007</b> (3/2 NC)	X
	G 1 1/2 (2)	<b>34397009</b>			

(M) Manual override: ▼ (impulse-type) - X (without)

(1) Port 3 (exhaust), always G1, supplied without silencer (accessory)

(2) The G 1 1/4 and G 1 1/2 versions are composed of a G 1 version + 1 set of 2 G 1 1/4 or G 1 1/2 flanges (1 connecting flange for each end of each component). When assembling several components together (FRL, isolation valve etc...), select G 1 components and provide for 1 set of G 1 1/4 or G 1 1/2 flanges (see pages 21 and 22 for flanges assembly)

Functional diagram automatic version



**OPTION**

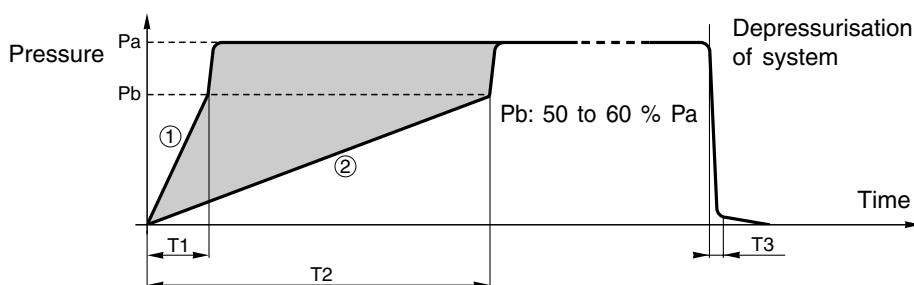
Key locking device attached to adjustment screw, supplied installed; code: **662598**

**ACCESSORIES** (other accessories: see pages 21 - 22)

- G1 silencer, code: **34600411**
- Key locking device supplied separately, code: **34303050**
- Blanking kit for adjustment screw designed to receive a key locking device, code: **34307021**
- Blanking plate for adjustment screw not designed to receive a key locking device, code: **34307022**
- By-pass module, see page 16

**SYSTEM PRESSURISATION AND DEPRESSURISATION CURVES**

• WITH AUTOMATIC SOFT-START DEVICE



The adjustment range for the pressurisation time lies between curves (1) and (2).

The transition to full flow takes place automatically as soon as the downstream pressure reaches 50 to 60% of the upstream pressure.

Filling and venting times (in seconds):

	Time in seconds	
	10 litres	20 litres
T1 (with screw loosened by 10 turns)	3,5	5,5
T2 (with screw loosened by 1 turn)	19	31
T3 (venting time)	1,5	2,5

These times correspond to a supply pressure (Pa) of 6.3 bar, a transition pressure (Pb) of 50% to 60% Pa (not adjustable) and a downstream system capacity between 10 and 20 litres.

## PRESENTATION

- This solenoid air operated monobloc unit provides two main functions:
  - **pneumatic system venting**
  - **gradual pressurisation** after an outage leading to venting of the system

## SPECIFICATION

FLUID	: Compressed air or neutral gas, filtered, lubricated or unlubricated
PORTS	: G3/4 to G1 1/2
OPERATING PRESSURE	: 2 to 16 bar
MAX. FLOW (Qv at 6,3 bar)	G3/4 : 10500 l/min. (ANR)
	G1- G1 1/4 - G1 1/2 : 12000 l/min. (ANR)
OPERATING TEMPERATURE	: 0°C, +50°C (+ 60°C at 12,5 bar)
PILOT AND RETURN	: pneumatic + spring

## CONSTRUCTION

Body	: aluminium
Internal parts	: light alloy and brass
Seals	: nitrile (NBR)

## CHOICE OF EQUIPMENT

description	port size (1)	code		(M)
		shut-off valve + soft-start unit	+ solenoid valve (~ / =)	
3/2 NC shut-off valve and soft-start system, <b>solenoid air</b> operated (without silencer)	G 3/4	<b>34397034</b>	1x <b>19200007</b> (3/2 NC)	X
	G 1	<b>34397035</b>	1x <b>19200013</b> (3/2 NO)	X
	G 1 1/4 (2)	<b>34397036</b>	1x <b>19200009</b> (3/2 NC)	▼
	G 1 1/2 (2)	<b>34397037</b>	1x <b>19200015</b> (3/2 NO)	▼

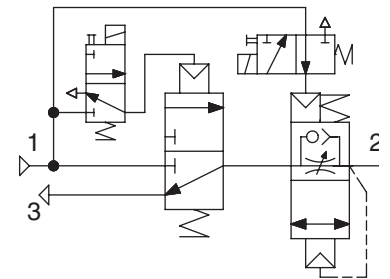
(M) Manual override: ▼ (impulse) - X (without)

(1) Port 3 (exhaust), always G1, supplied without silencer (accessory)

(2) The G 1 1/4 and G 1 1/2 versions are composed of a G 1 version + 1 set of 2 G 1 1/4 or G 1 1/2 flanges (1 connecting flange for each end of each component). When assembling several components together (FRL, isolation valve etc...), select G 1 components and provide for 1 set of G 1 1/4 or G 1 1/2 flanges (see pages 21 and 22 for flanges assembly)



Functional diagram  
solenoid/air controlled version



## OPTION

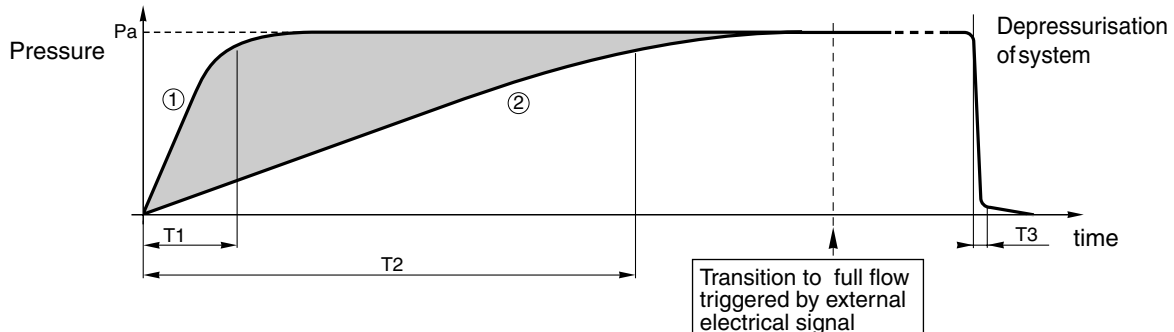
Key locking device attached to adjustment screw, supplied installed; code: **662598**

## ACCESSORIES (other accessories: see pages 21 - 22)

- G1 silencer, code: **34600411**
- Key locking device supplied separately, code: **34303050**
- Blanking kit for adjustment screw designed to receive a key locking device, code: **34307021**
- Blanking plate for adjustment screw not designed to receive a key locking device, code: **34307022**
- By-pass module, see page 16

## SYSTEM PRESSURISATION AND DEPRESSURISATION CURVES

- WITH A SOLENOID/AIR CONTROLLED SOFT-START DEVICE



Unlike the automatic soft-start version, this version only authorises full flow on receiving a permanent electrical signal. The adjustment range for the pressurisation time lies between curves (1) and (2). Filling and venting times (in seconds):

	Time in seconds	
	10 litres	20 litres
T1 (with screw loosened by 10 turns)	9,5	15
T2 (with screw loosened by 1 turn)	44	68
T3 (venting time)	1,5	2,5

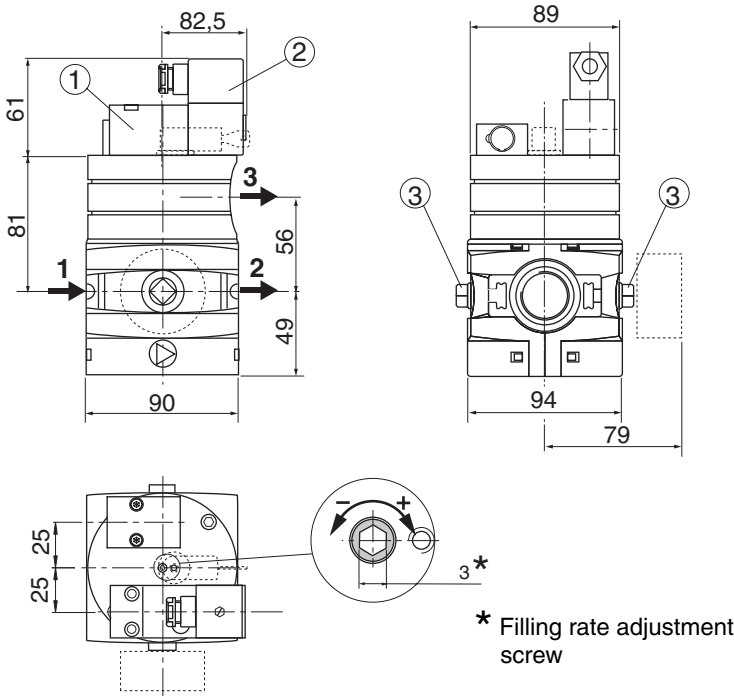
These times correspond to a supply pressure (Pa) of 6.3 bar, a downstream system capacity of **10 and 20 litres** and a pressure of 90% Pa.



**DIMENSIONS AND WEIGHTS - G3/4 - G1 VERSIONS**

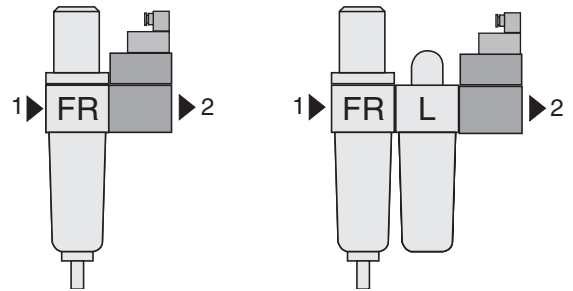
**SOLENOID AIR OPERATED SHUT-OFF VALVE AND AUTOMATIC SOFT-START UNIT**

Weight: 1,670 Kg



**G 1 1/4 - G 1 1/2 versions-** see accessories

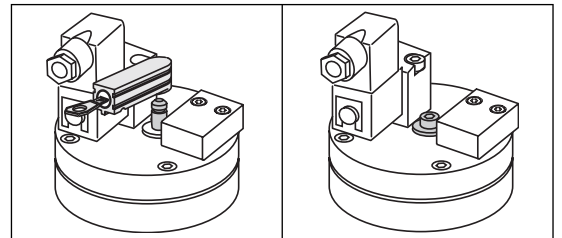
**RECOMMENDED CONFIGURATIONS**



**LOCKING OPTIONS FOR ADJUSTMENT SCREW**

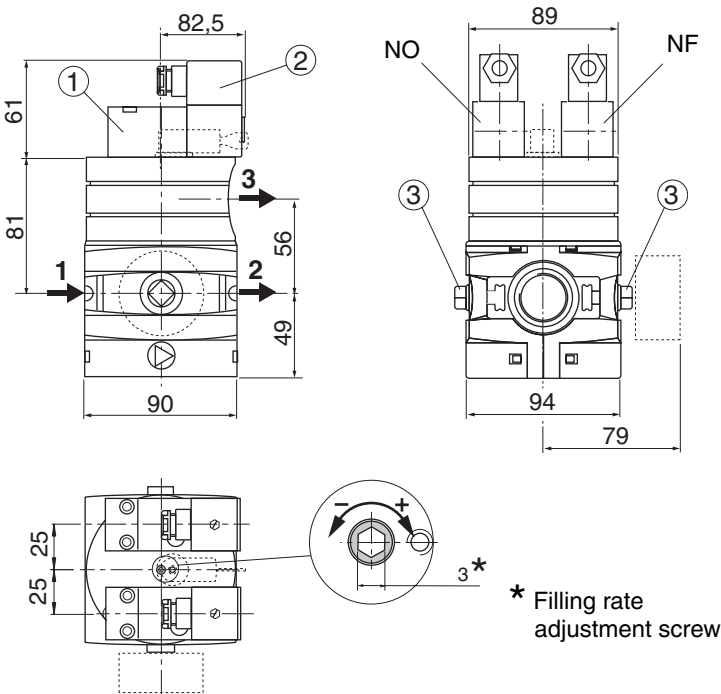
Unit with key locking device for adjustment screw

Unit with blanking plate for adjustment screw



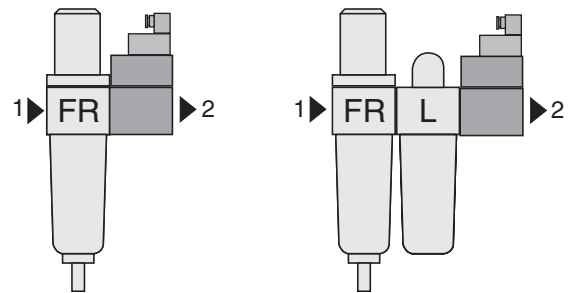
**SOLENOID AIR OPERATED SHUT-OFF VALVE AND SOFT-START UNIT**

Weight: 1,940 Kg



**G 1 1/4 - G 1 1/2 versions-** see accessories

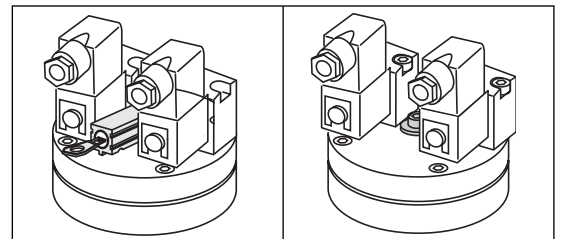
**RECOMMENDED CONFIGURATIONS**



**LOCKING OPTIONS FOR ADJUSTMENT SCREW**

Unit with key locking device for adjustment screw

Unit with blanking plate for adjustment screw



- ① 3/2 pilot solenoid valve
- ② Connector to ISO 4400, rotatable by 180° increments
- ③ 2 x G1/4 ports for mounting of a dia 50 mm 0-16 bar pressure gauge - code: **34200997** (provide for a 1/4 to 1/8 adapter), or a subbase-mount pressure switch (with hexagon adapter - see accessories), or an electronic pressure switch