

PRESENTATION

- This automatic soft-start, air operated monobloc unit provides two main functions:
 - **pneumatic system venting**
 - **gradual pressurisation** after an outage leading to venting of the system

SPECIFICATION

FLUID : Compressed air or neutral gas, filtered, lubricated or unlubricated
 PORTS : G3/4 to G1 1/2
 OPERATING PRESSURE : 2 to 16 bar
 MAX. FLOW (Qv at 6,3 bar) G3/4 : 10500 l/min. (ANR)
 G1- G1 1/4 - G1 1/2 : 12000 l/min. (ANR)
 OPERATING TEMPERATURE : 0°C, +50°C (+ 60°C at 12,5 bar)
 PILOT PORTS : G1/8

CONSTRUCTION

Body : aluminium
 Internal parts : light alloy and brass
 Seals : nitrile (NBR)

CHOICE OF EQUIPMENT

description	port size (1)	code
3/2 NC shut-off valve and automatic soft-start unit, air operated (without silencer)	G 3/4	34307006
	G 1	34307007
	G 1 1/4 (2)	34307008
	G 1 1/2 (2)	34307009

- (1) Port 3 (exhaust), always G1, supplied without silencer (accessory)
 (2) The G 1 1/4 and G 1 1/2 versions are composed of a G 1 version + 1 set of 2 G 1 1/4 or G 1 1/2 flanges (1 connecting flange for each end of each component). When assembling several components together (FRL, isolation valve etc...), select G 1 components and provide for 1 set of G 1 1/4 or G 1 1/2 flanges (see pages 21 and 22 for flanges assembly)

OPTION

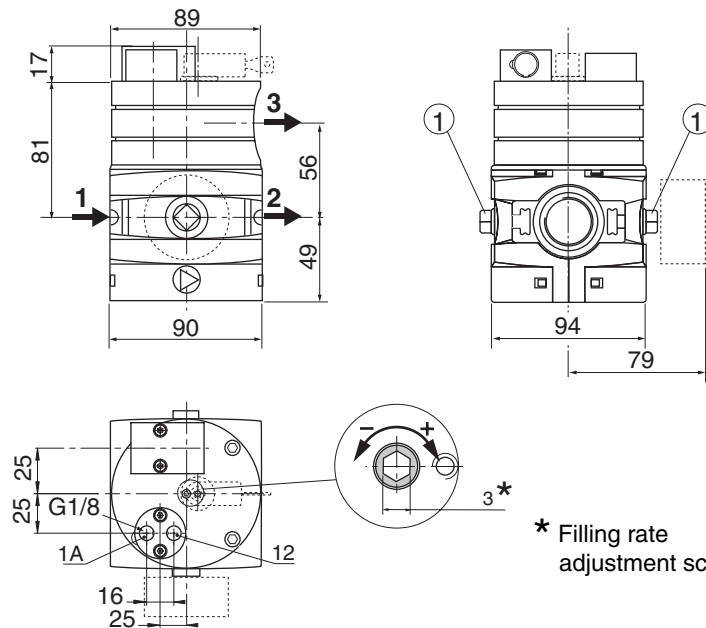
Key locking device attached to adjustment screw, supplied installed; code: **662598**

ACCESSORIES (other accessories: see pages 21 - 22)

- G1 silencer, code: **34600411**
- Key locking device supplied separately, code: **34303050**
- Blanking kit for adjustment screw designed to receive a key locking device, code: **34307021**
- Blanking plate for adjustment screw not designed to receive a key locking device, code: **34307022**
- By-pass module, see page 16

DIMENSIONS AND WEIGHTS - G3/4 - G1 VERSIONS

Weight: 1,465 Kg

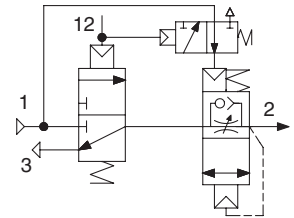


G 1 1/4 - G 1 1/2 versions - see accessories

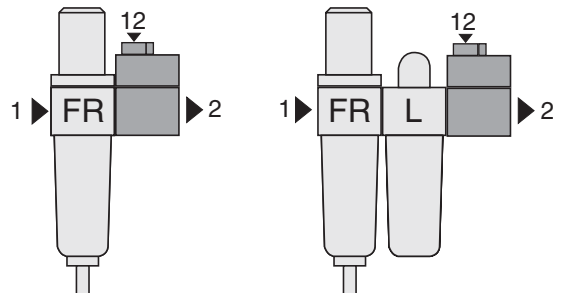
- ① 2 x G1/4 ports for mounting of a dia. 50 mm 0-16 bar pressure gauge, code: **34200997** (provide for 1/4 to 1/8 adapter), or a subbase-mount pressure switch (with hexagon adapter - see accessories), or an electronic pressure switch



Functional diagram automatic version



RECOMMENDED CONFIGURATIONS



LOCKING OPTIONS FOR ADJUSTMENT SCREW

Unit with key locking device for adjustment screw Unit with blanking plate for adjustment screw

