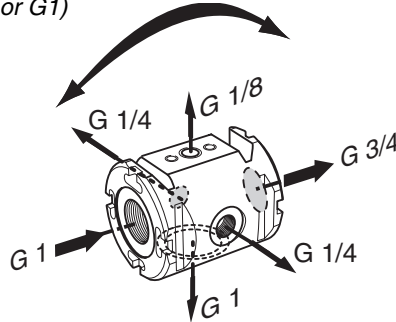
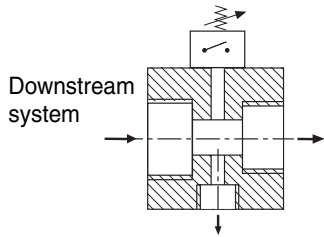


**PRESENTATION**

This by-pass module is designed to fit onto the end of an air service system. It can be used for:

- assembling a pressure switch to control the compressed air pressure (subbase-mounted)
- drawing off air through a by-pass (G1/4 or G1)
- connecting the main downstream system (G3/4 or G1)



**CHOICE OF EQUIPMENT**

description	by-pass port	main outlet port	code	
Modulair 160 range by-pass module designed to receive a pressure switch	G 1/4 or G 1	G 3/4 or G 1	<b>34307020</b>	May be fitted with all Modulair 160 range products

**OTHER PRODUCT OPTIONS**

- Hexagon adapter for the installation of a subbase-mount pressure switch (see accessories)
- Subbase-mount (see P718-1) or electronic (see P718-2) pressure switch

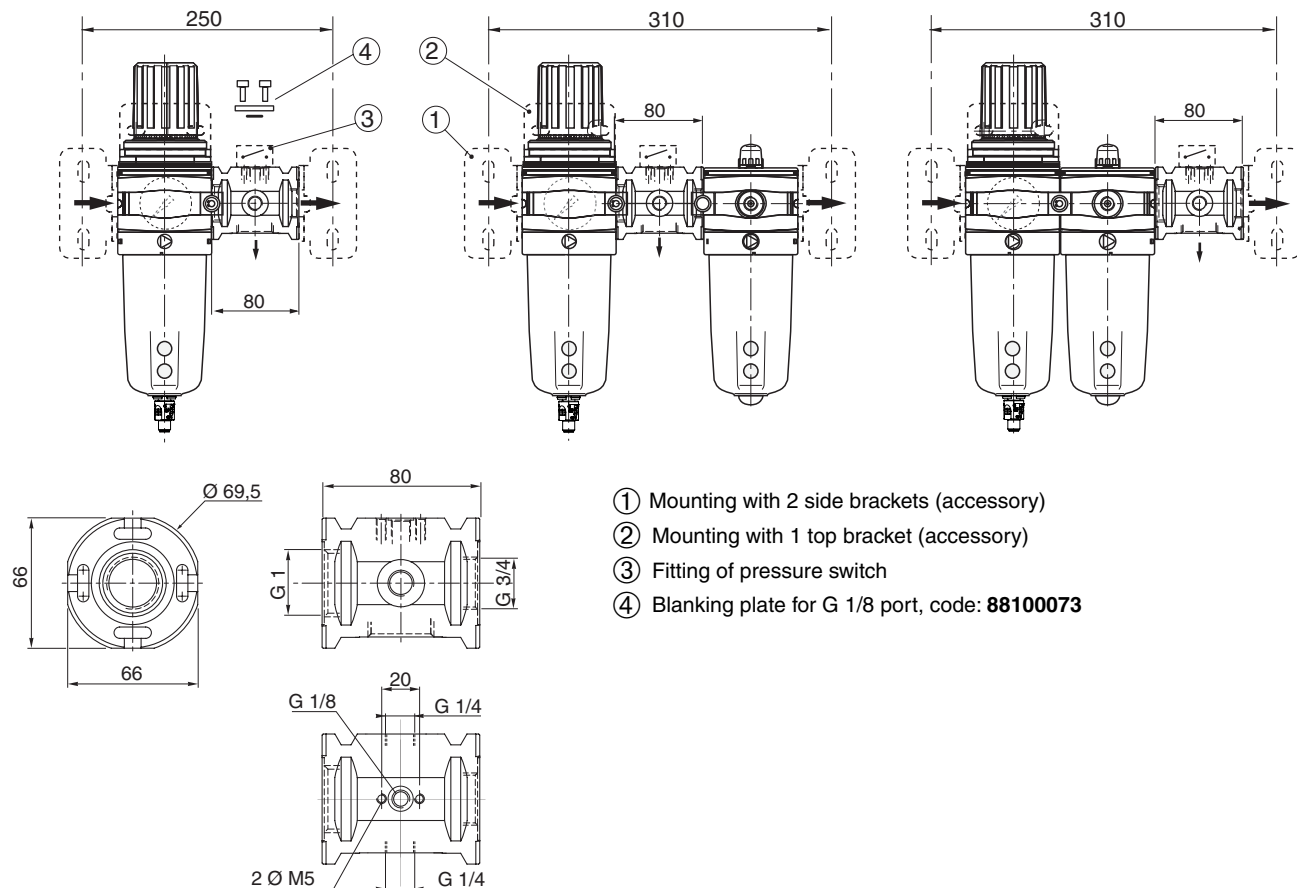
**ACCESSORIES** (see pages 21 - 22)

**DIMENSIONS AND WEIGHTS - G3/4 - G1 VERSIONS**

Weight: 0,550 Kg

**Standard assembly**

**Assembly before or after a lubricator**



- ① Mounting with 2 side brackets (accessory)
- ② Mounting with 1 top bracket (accessory)
- ③ Fitting of pressure switch
- ④ Blanking plate for G 1/8 port, code: **88100073**