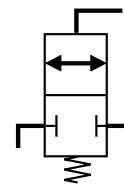


ORIENTABLE CYLINDER BLOCKING FITTING

port size G1/8 to G1/2
air-operated

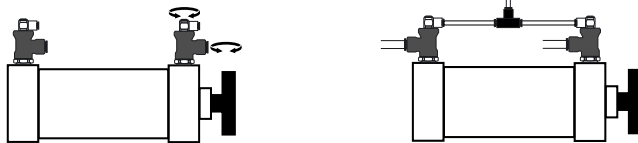


FEATURES

- Air-operated, monostable, normally-closed 2/2 valve
- Blocking fittings can be used to interrupt the circulation of compressed air
- **When installed in pairs**, they ensure that the cylinder stops as soon as pilot pressure is lost
- They can be used to lock the load in the event of loss of the pressure supply or to set a cylinder to intermediate stable positions

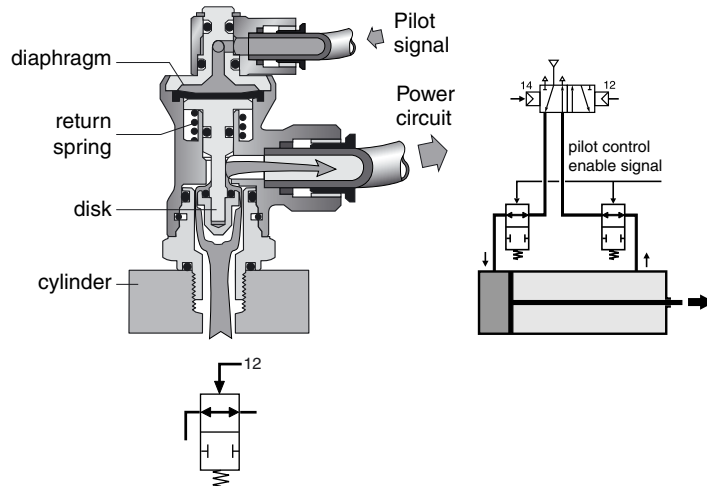
INSTALLATION

- Directly fitted to cylinder ports for compact installation
- Fully orientable on all ports to adapt to any pneumatic connection configuration

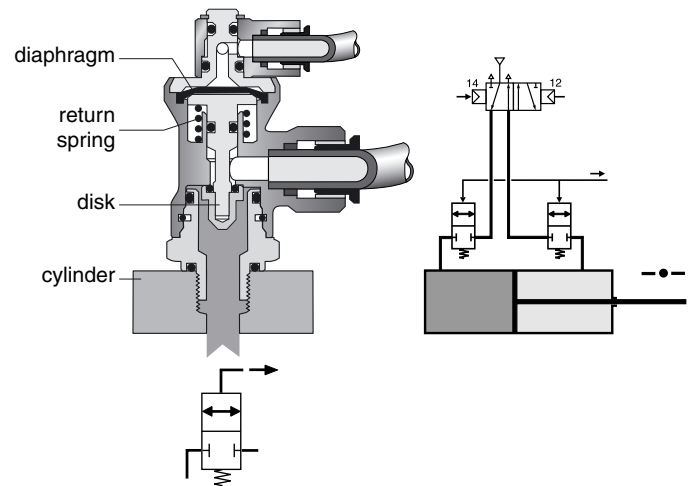


OPERATING PRINCIPLE

Cylinder in movement (pilot pressure applied)



Cylinder locked (no pilot pressure)

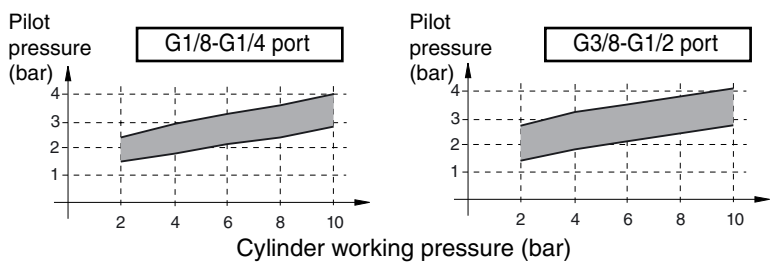


CONSTRUCTION

- MEDIUM** : Lubricated or unlubricated filtered neutral gas or air
- OPERATING PRESSURE** : 10 bar max.
- PILOT PRESSURE** : 1.5 to 4 bar
- TEMPERATURE** : -20°C to +70°C
- FLOW (Qv at 6 bar)** : see table below
- LEAK RATE** : <0.2 l/h
- BODY** : treated brass
- DIAPHRAGM AND SEALS** : Nitrile (NBR)

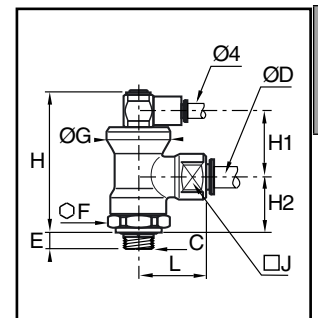
Piloting on/off thresholds

depending on cylinder working pressure



SPECIFICATIONS - DIMENSIONS

Port size ØC	Coupler size ØD	Flow at 6 bar l/min (ANR)	catalogue number	Dimensions								Weight (kg)
				E	F Ø	G Ø	H	H1	H2	J □	L	
G1/8	6	650	34602448	5	21	24	53	25	21	17	28	0,121
G1/4	6	650	34602449	5,5	21	24	53	25	21	17	28	0,124
G1/4	8	650	34602450	5,5	21	24	53	25	21	17	28	0,119
G3/8	8	650	34602451	5,5	24	28	56	25	23	27	35	0,122
G3/8	10	1600	34602452	5,5	24	28	56	25	23	27	35	0,197
G1/2	12	1600	34602453	7	24	28	56	25	23	27	38	0,203



J

00222GB-2010/R01
Availability, design and specifications are subject to change without notice. All rights reserved.

Port connection pushing fittings and power at pilot ports

