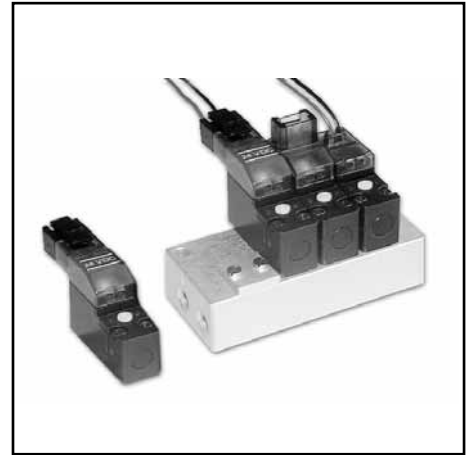


## GENERAL

<b>Fluid</b>	Air or neutral gas, non-lubricated, filtered at 25 µm
<b>Operating pressure</b>	7 bar max.
<b>Ambient temperature</b>	+5°C to +50°C
<b>Flow (Qv at 6 bar)</b>	See "specifications"
<b>Manual operator</b>	Impulse-type (without manual operator on request)
<b>Switching time</b>	10 ms (<10 ms on request)

## CONSTRUCTION

<b>Body</b>	PA (polyamide) MXD6
<b>Internal parts</b>	Stainless steel, nickel-plated steel, synthetic material, aluminium
<b>Seals</b>	NBR (nitrile), FPM (fluoroelastomer) on request



## ELECTRICAL CHARACTERISTICS

voltage (other voltages on request)	consumption	insulation class	degree of protection	electrical connection
24V = 12V = 5V =	1W - 1,3W	F	IP 40	connector with two 0.5 mm <sup>2</sup> lead wires + built-in LED and electrical protection or cable ends, 0,5 m long
+10%, -15%				

The solenoid valves are designed for continuous operation within the maximum ambient temperature limits.

## SPECIFICATIONS

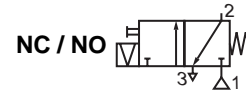
symbol	orifice size (mm)		flow		operating pressure (bar)		consumption (W)	type of electrical connection (*)	catalogue number
	1 → 2	2 → 3	at 6 bar l/min (ANR)	coeff. Kv	min.	max.			
	0,5	0,7	8	0,12	0	8	1,3	1	<b>18801003</b>
								2	<b>18801076</b>
								3	<b>18801074</b>
								4	<b>18801078</b>
								5	<b>18801072</b>
	0,8	0,8	10	0,15	0	4	1,3	1	<b>18801081</b>
								2	<b>18801082</b>
								3	<b>18801083</b>
								4	<b>18801084</b>
1,0	1,0	12	0,18	0	2,5	1,3	5	<b>18801085</b>	
							1	<b>18801086</b>	
							2	<b>18801087</b>	
							3	<b>18801088</b>	
							4	<b>18801089</b>	
	0,5	0,7	8	0,12	0	6	1,3	1	<b>18801063</b>
								2	<b>18801077</b>
								3	<b>18801075</b>
								4	<b>18801079</b>
								5	<b>18801073</b>
	0,8	0,8	10	0,15	0	3	1,3	1	<b>18801091</b>
								2	<b>18801092</b>
								3	<b>18801093</b>
								4	<b>18801094</b>
	1,0	1,0	12	0,18	0	1,5	1,3	5	<b>18801095</b>
								1	<b>18801096</b>
								2	<b>18801097</b>
							3	<b>18801098</b>	
							4	<b>18801099</b>	
							5	<b>18801100</b>	

(\*) Type 1,2,3, 4 with LED and electrical protection  
 1 = horizontal, width 5,08 mm  
 2 = vertical, width 5,08 mm

3 = horizontal, width 2,54 mm  
 4 = vertical, width 2,54 mm  
 5 = cable ends 0,5 m long, 0,25 mm<sup>2</sup>

# MICRO SOLENOID VALVES

direct operated  
Ø M3 subbase-mounted body  
with latching coil



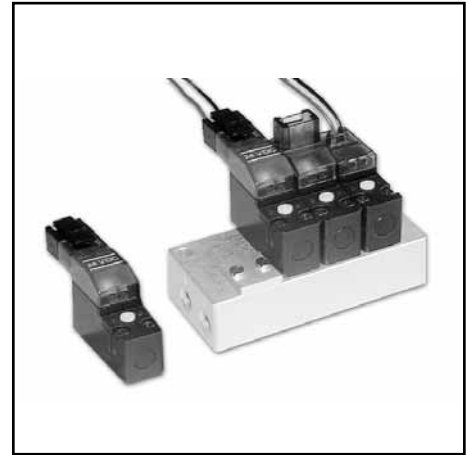
**3/2**  
Series  
**188**  
Type  
Micro 10

## GENERAL

**Fluid** Air or neutral gas, non-lubricated, filtered at 25 µm  
**Operating pressure** 8 bar max.  
**Ambient temperature** +5°C to +50°C  
**Flow (Qv at 6 bar)** See "specifications"  
**Manual operator** Impulse-type (without manual operator on request)  
**Switching time** 10 ms (<10 ms on request)

## CONSTRUCTION

**Body** PA (polyamide) MXD6  
**Internal parts** Stainless steel, nickel-plated steel, synthetic material, aluminium  
**Seals** NBR (nitrile), FPM (fluoroelastomer) on request



## ELECTRICAL CHARACTERISTICS

voltage (other voltages on request)	consumption	insulation class	degree of protection	electrical connection
24V = 12V = { (+10%, -15%) 5V =	1W - 1,3W	F	IP 40	connector with two 0.5 mm <sup>2</sup> lead wires + built-in LED and electrical protection or cable ends, 0,5 m long

The solenoid valves are designed for continuous operation within the maximum ambient temperature limits.

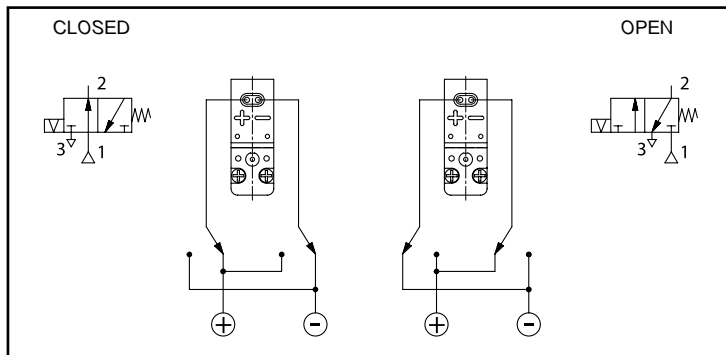
## SPECIFICATIONS

symbol	orifice size (mm)		flow		operating pressure (bar)		consumption (W)	type of electrical connection (*)	catalogue number
	1 → 2	2 → 3	at 6 bar l/min (ANR)	coeff. Kv	min.	max.			
	0,5	0,7	8	0,12	0	7	1,3	1	<b>18801101</b>
								2	<b>18801102</b>
								3	<b>18801103</b>
								4	<b>18801104</b>
								5	<b>18801105</b>
	0,8	0,8	10	0,15	0	3	1,3	1	<b>18801106</b>
								2	<b>18801107</b>
								3	<b>18801108</b>
								4	<b>18801109</b>
								5	<b>18801110</b>
	1,0	1,0	12	0,18	0	1	1,3	1	<b>18801111</b>
								2	<b>18801112</b>
								3	<b>18801113</b>
								4	<b>18801114</b>
								5	<b>18801115</b>

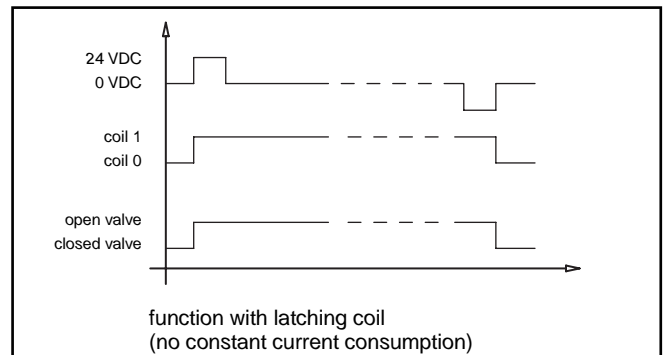
(\*) type 1, 2, 3, 4 with LED and electrical protection  
 1 = horizontal, width 5,08 mm  
 2 = vertical, width 5,08 mm

3 = horizontal, width 2,54 mm  
 4 = vertical, width 2,54 mm  
 5 = cable ends, 0,5 m long, 0,25 mm<sup>2</sup>

## WIRING DIAGRAM



## FUNCTIONAL DIAGRAM



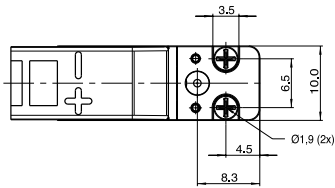
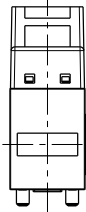
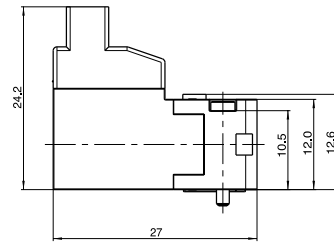
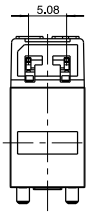
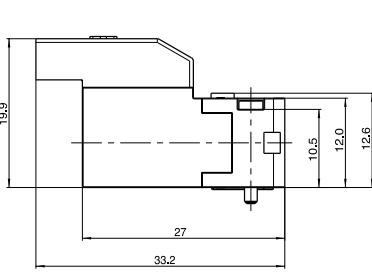
**DIMENSIONS (mm), WEIGHT (kg)**



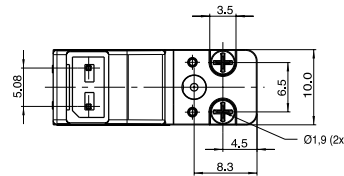
<b>weight</b>
0,0095

**type 1**

**type 2**



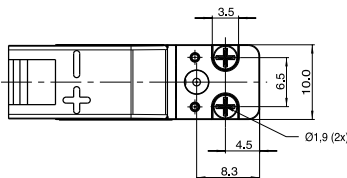
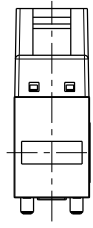
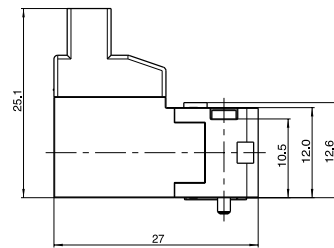
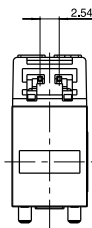
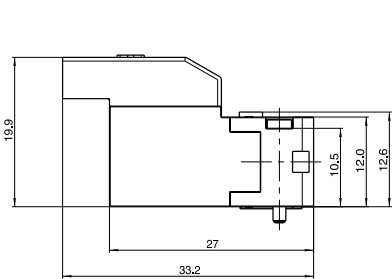
**Scale 1**



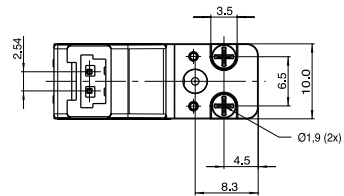
**Scale 1**

**type 3**

**type 4**



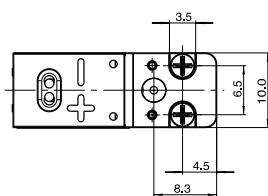
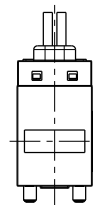
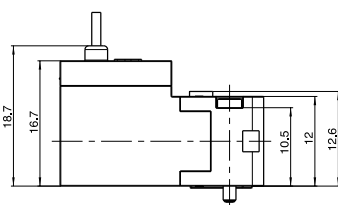
**Scale 1**



**Scale 1**

**flange facing**

**type 1**



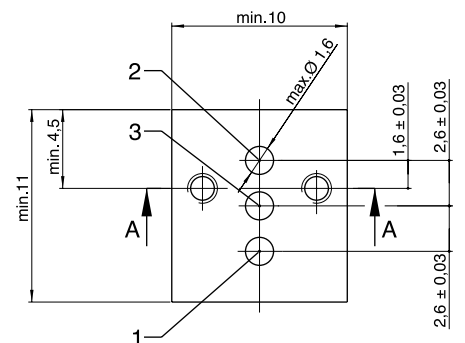
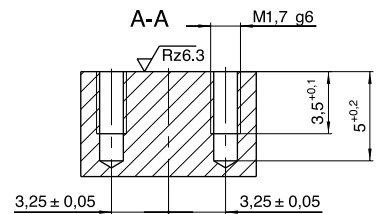
**Scale 1**

<b>NO</b>
3 = Pressure
2 = Outlet
1 = Exhaust

<b>NC</b>
1 = Pressure
2 = Outlet
3 = Exhaust

<b>Use in vacuum (NO)</b>
3 = Vacuum pump
2 = Outlet
1 = Atmosphere

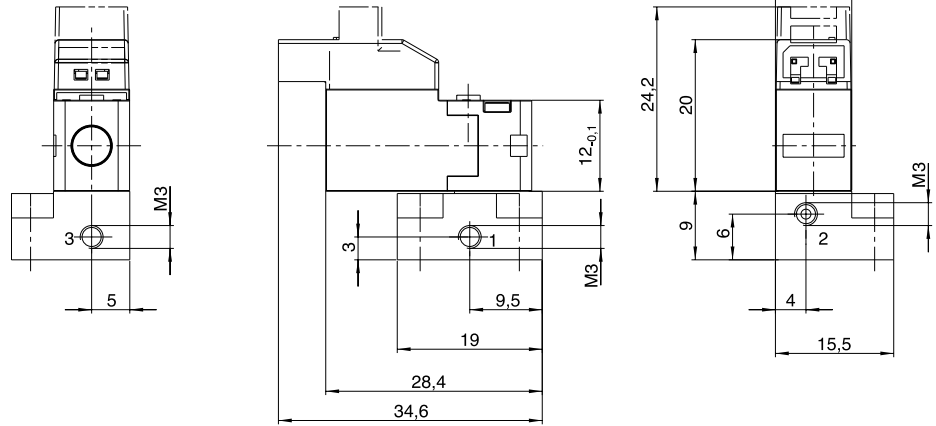
<b>Use in vacuum (NC)</b>
1 = Vacuum pump
2 = Outlet
3 = Atmosphere



**DIMENSIONS (mm), WEIGHT (kg)**

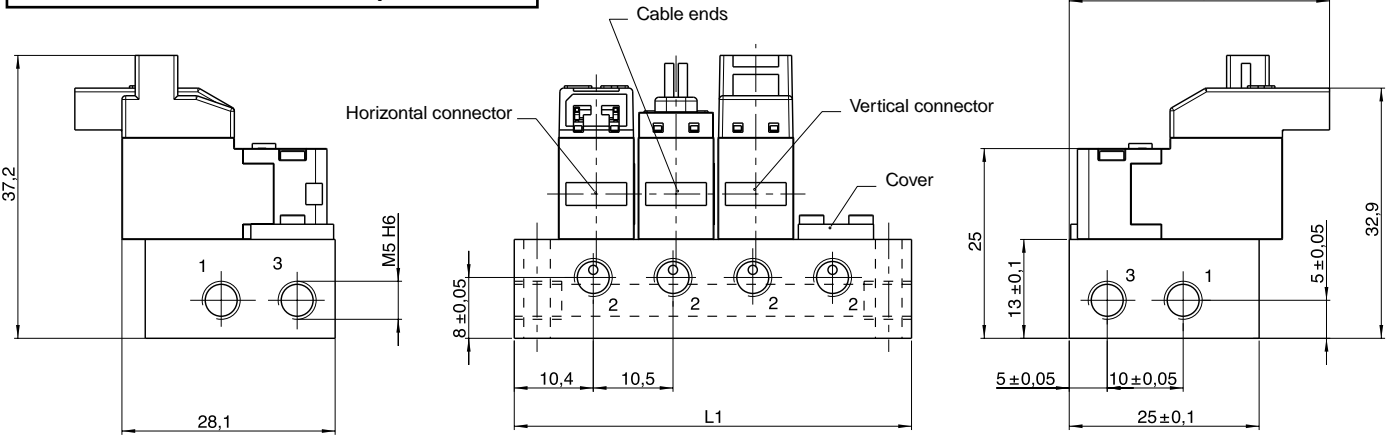
solenoid valve mounted on **single subbase**

number of valves	subbase catalogue number*	weight
1	35300101	0,024

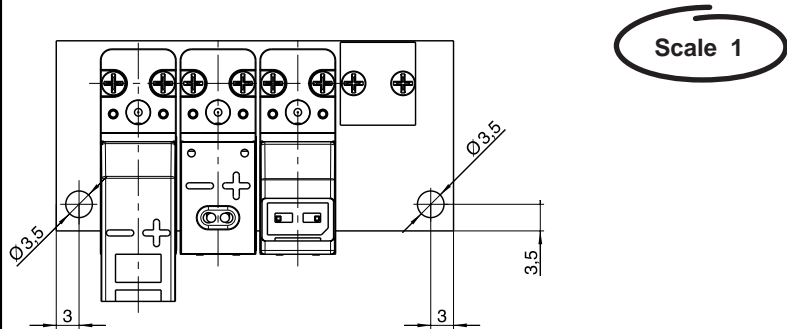


Scale 1

solenoid valve mounted on **multiple subbase**



number of valves	subbase catalogue number*	length		weight
		L1	L2	
2	35300102	33,5	27,5	0,059
3	35300103	44	38	0,090
4	35300104	54,5	48,5	0,121
5	35300105	65	59	0,152
6	35300106	75,5	69,5	0,183
7	35300107	86	80	0,212
8	35300108	96,5	90,5	0,241
9	35300109	107	101	0,272
10	35300110	117,5	111,5	0,303



A : Blanking plate, **cat. no. 88135305**

\* The connectors must be ordered **separately**, please indicate the quantity and one of the following codes:

Connector, 2 wires

- Distance between contacts 5,08 mm - Length 0,5 m - **cat. no.: 88118801**
- Length 1,5 m - **cat. no.: 88118802**
- Length 3 m - **cat. no.: 88118803**

- Distance between contacts 2,54 mm - Length 0,5 m - **cat. no.: 88118806**
- Length 1,5 m - **cat. no.: 88118807**
- Length 3 m - **cat. no.: 88118808**

