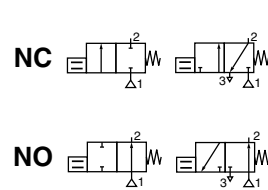


JOUCOMATIC

MINI PIEZO-VALVES PIEZOTRONIC

direct operated

ISO 15218 (CNOMO, size 15) interface
pad mounting body, M5, G1/8 or instant fittings subbase



2/2-3/3
Series
630

SPECIFICATIONS

FLUIDS : air or neutral gas, filtered at 25 µm, condensate free
dew point -10°C

PRESSURE : 0 to 4 or 8 bar

MAX. ALLOWABLE PRESSURE (MAP) : 8 bar

FLUID TEMPERATURE : 0°C to +60° C

AMBIENT TEMPERATURE : 0°C to +60° C

STORAGE TEMPERATURE : -40°C to +60°C

BASE : ISO 15218 (CNOMO E06.36.120N, size15)
or ISO 15218 (CNOMO E06.05.80, size 30) with adapter

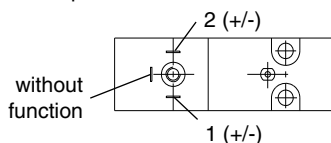
MOUNTING : on subbases ØM5, G1/8 or instant fittings

SERVICE LIFE : > 10⁹ cycles at 6 bar

MOUNTING POSITION : all

ELECTRICAL CONNECTION
version with pins

Non polarized solenoid valve



CONSTRUCTION

Body : synthetic material (PPS)

Internal parts : piezo ceramics

Sealings : nitrile (NBR)

Manual override : without or impulse type

Subbase : brass, polyamide, zinc diecast



Version with wires
Non polarized solenoid valve

ELECTRICAL CHARACTERISTICS

| Voltage (Maximum ripple : 10 %) | Power consumption at 24 V | | Response time | Protection degree | Electrical connection |
|------------------------------------|---------------------------|----------------|--------------------------|-------------------|--|
| | inrush | hold | | | |
| 24 to 70 V AC/DC ±10% | 0,6 W | 0,007 W | 50 ms (DC) 70 ms (AC) | IP 65 | Spade plug size 15 connector, DIN 43650, 9,4 mm, industry standard B, rotatable by 90°, Option : with wires, length 1 m |

Switching current = 25 mA/30ms

SPECIFICATIONS

| Symbols Functions | Flow | | Allowable differential pressure (Δ p in bar) | | (M) | catalogue number | | |
|----------------------|-------------------------|-------------------|--|------|--------|--|------------------------------------|--------------------------------------|
| | at 6 bar l/min (ANR) | Coefficient Kv | min. | max. | | PIEZOTRONIC with pins with standard connector | without connector | PIEZOTRONIC with 2 wires, 1m long |
| 2/2 NC | 6 | 0,086 | 0 | 8 | X ▼ | 63000065 63000071 | 63000003 63000009 | 63000015 63000021 |
| | 6,5 ⁽¹⁾ | 0,12 | 0 | 4 | X ▼ | 63000067 63000073 | 63000005 63000011 | 63000017 63000023 |
| 2/2 NO | 6 | 0,086 | 0 | 8 | X ▼ | 63000066 63000072 | 63000004 63000010 | 63000016 63000022 |
| | 6,5 ⁽¹⁾ | 0,12 | 0 | 4 | X ▼ | 63000068 63000074 | 63000006 63000012 | 63000018 63000024 |
| 3/2 NC | 7 | 0,10 | 2 | 8 | X ▼ | 63000063 63000069 | 63000001 63000007 | 63000013 63000019 |
| 3/2 NO | 6 | 0,086 | 2 | 8 | X ▼ | 63000064 63000070 | 63000002 63000008 | 63000014 63000020 |

(M) Manual operator: X : without ▼ : Impulse

(1) Flow at 4 bar in l/min (ANR)

SUBBASES: Single subbase with lateral connection Ø M5 - cat no.: **88263002**

Single subbase - connection G1/8 - cat no.: **35300047**

Joinable subbase - connection G1/8 - cat no.: **35300048**

OPTION : Minivalve operated, intrinsically safe EEx ia, 12V - 24V DC

ACCESSORIES

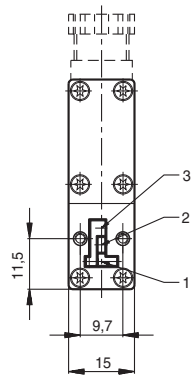
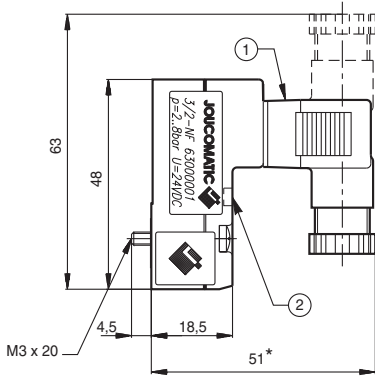
| DESCRIPTION | catalogue number |
|---|------------------|
| Visual indicator LED (Caution, consumption 0,25W and voltage 24V max.) | 88130401 |
| Plug size 15 with 2 m cable | 88143567 |
| Plug size 15 with built-in visual indicator (LED), with 2 m cable 24V =/~ max. | 88143580 |
| Adapter for mounting PIEZOTRONIC on base ISO 15218 (CNOMO E06.05.80, size 30) | 88263001 |

All leaflets are available on: www.asconumatics.eu

DIMENSIONS AND WEIGHTS

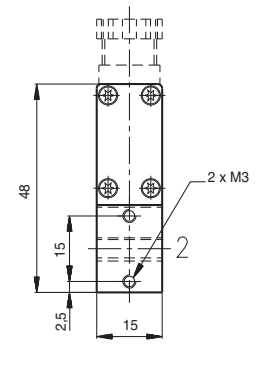
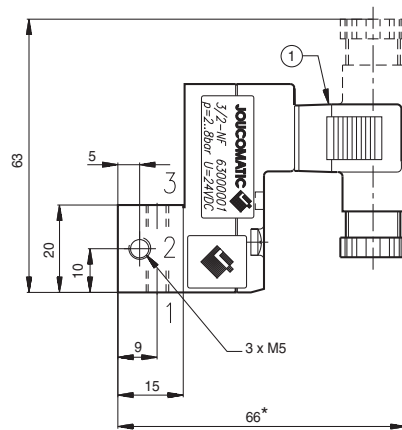
MINI PIEZO-VALVE WITH STANDARD CONNECTOR

Weight : 24 g without connector
34 g with connector



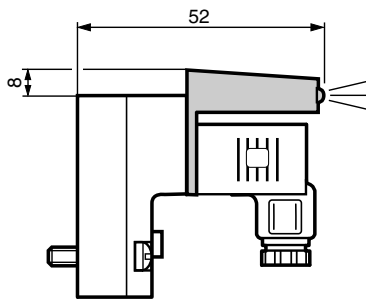
MINI PIEZO-VALVE ON SINGLE SUBBASE 88263002

Weight : 45 g



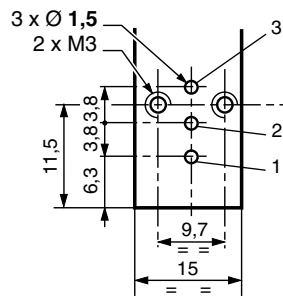
ASSEMBLY WITH LED INDICATOR

(accessory, rotatable x180°)



MOUNTING FACE

Subbase for mini piezo-valve
ISO 15218 (CNOMO
E06.36.120N, size15)



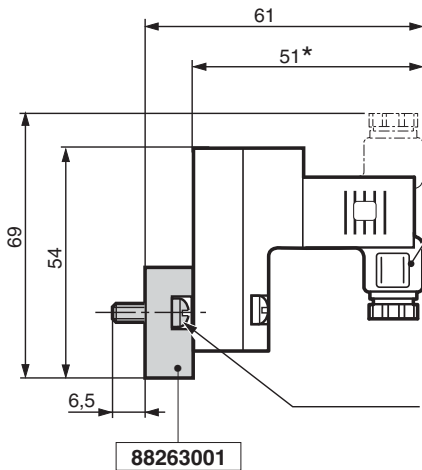
Single subbase connection :

Outlet (2) can be connected on the left or on the right of subbase ; closed unused port with a Ø M5 plug (supplied).

- ① Connector size 15 rotatable by 90°
- ② Manual operator by impulse
- (*) + 10 mm for clearance

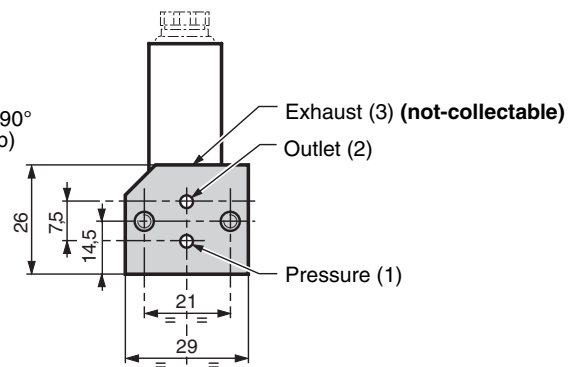
MINI VALVE + Intermediate subbase (Adapter CNOMO size 30 : cat no.: 88263001)

Total weight : 53 g



Connector rotatable x 90°
CM6 (Pg 7p)

Mounting
2 screws
CM4x10



* + 10 mm for clearance