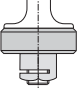

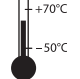


### GENERAL / CONSTRUCTION / SPECIFICATIONS

See catalogue pages

Section D (2/2): V451, V453, V455  
Section F (3/2): V751, V753, V755

### CHOICE OF OPTIONS AND ACCESSORIES

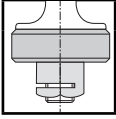
construction type	see page	catalogue page					NC fluid entry above/under disc	NO fluid entry above/under disc	U fluid entry above/under disc	operator dia. compatibility (mm)				body stainless steel
		V451	V453	V455	V751	V753				V755	80	100	150	
<b>01</b>  <i>Disc with metal/metal sealing</i>	<b>2</b>	☒	☒	☒	☒	☒	•	•	•	•	•	•	•	☒
<b>02</b>  <i>Signaling box, with mechanical or inductive contacts (Use of the box limited to Ts amb = -25°C to 80°C)</i>	<b>3</b>	☒	☒	☒	☒	☒	•	•	•	•	•	•	•	☒
<b>03</b>  <i>Low ambient temperatures Temperature range: -50°C to +70°C</i>	<b>2</b>	☒	☒	☒	☒	☒	•	•	•	•	•	•	•	☒

☒ Valves with female threaded ports.

☒ Valves with flange connection.

☒ Valves with socket welding ends.

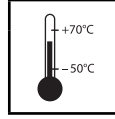
D



### CONSTRUCTION 01

#### Disc with metal/metal sealing

- Disc made of stainless steel 304 for high temperatures, contaminated water and variable temperature cycles (all versions)



### CONSTRUCTION 03

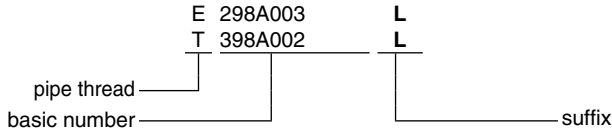
#### Low ambient temperatures

- Temperature range from -50°C to +70°C

#### TO ORDER (for compatibility see page 1)

- Add suffix L

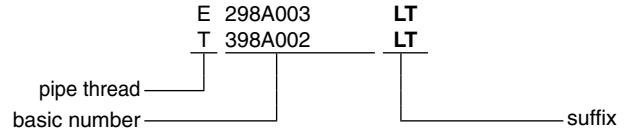
#### ORDERING EXAMPLES:



#### TO ORDER (for compatibility see page 1)

- Add suffix LT

#### ORDERING EXAMPLES:



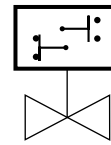
#### ORDERING EXAMPLES:

#### SUFFIX COMBINATIONS

	construction
E 298 A 003	-
E 298 A 003 L	1
E 298 A 003 LT	3
E 298 A 003 LLT	1 + 3
E 298 A 003 LSM2	1 + 2
E 298 A 003 LSI2	1 + 2

pipe thread	_____		suffix
basic number	_____		



### FEATURES

- The signaling box fits all series 298 (2/2) and 398 (3/2) valves to indicate whether the valve is open or closed
- It is rotatable through 360° and equipped with two mechanical or inductive contacts
- The signaling box is supplied pre-installed and pre-adjusted on the valve
- The version with mechanical contacts can be used with up to max. 250 V AC and in magnetic field environments

### GENERAL / OPERATION

At both end-of-travel positions (open and closed) of the valve stem, cams on the signaling box plunger operate contacts which provide an electrical signal indicating that the end position is reached.

**Ambient temperature range** -25°C to +80°C

### CONSTRUCTION

**Body, cover** PA  
**Degree of protection** IP66  
**Unit can be rotated through 360° around the centreline of the valve operator (set screw)**

### ELECTRICAL CHARACTERISTICS

mechanical contacts	inductive contacts
Breaking capacity of contacts: • resistive circuit: 3,2 A at 250 V AC • inductive circuit: 1,8 A at 250 V AC (cos Ø = 0,8)	• 10 to 30 V DC power supply • load current 200 mA max. • built-in electrical protection

### Electrical connection

mechanical contacts 1 terminal strip with 6 screw terminals  
 inductive contacts 2 terminal strips with 2 screw terminals

**Max. grip** 2,5 mm<sup>2</sup>

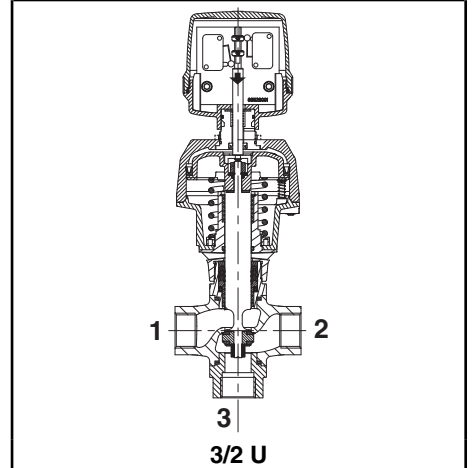
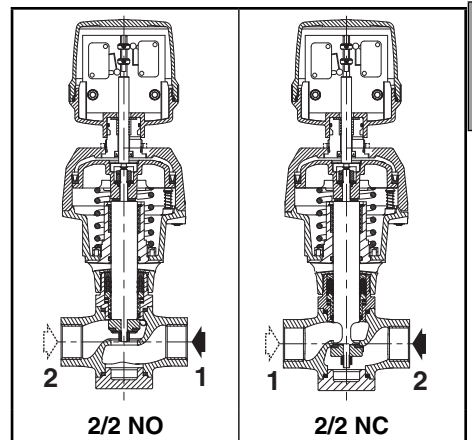
**Cable entry** 1 cable gland (cable Ø 5-10 mm)

### SPECIFICATIONS

operator	suffix <sup>(1)</sup> signaling box supplied installed on valve	
	2 mechanical contacts	2 inductive contacts
Ø 80 mm, Ø 100 mm, Ø 150 mm, Ø 200 mm	<b>SM2</b>	<b>SI2</b>

<sup>(1)</sup> Add the appropriate suffix after the catalogue number of the selected valve, example:

- catalogue number of valve alone **E298A003**
- catalogue number of valve + pre-installed inductive contacts box = **E298A003SI2**



**D**

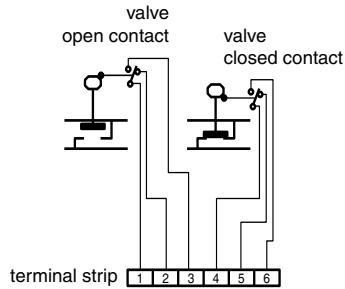
### OPTIONS

- Other types of contacts: contact us

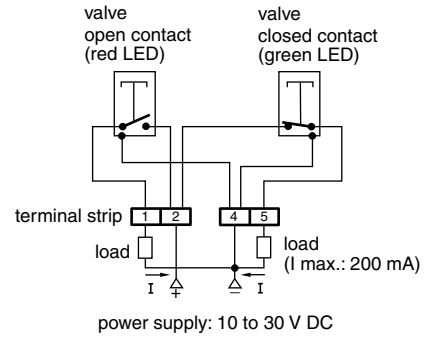
### INSTALLATION

- The signaling box can be installed in any position
- Electrical connection:

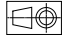
#### mechanical contacts

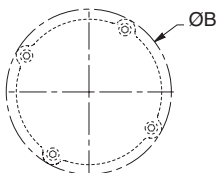
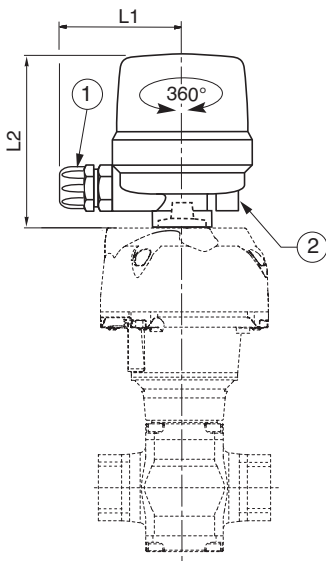


#### inductive contacts (valve closed)

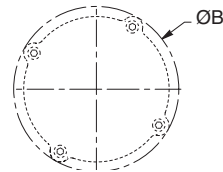
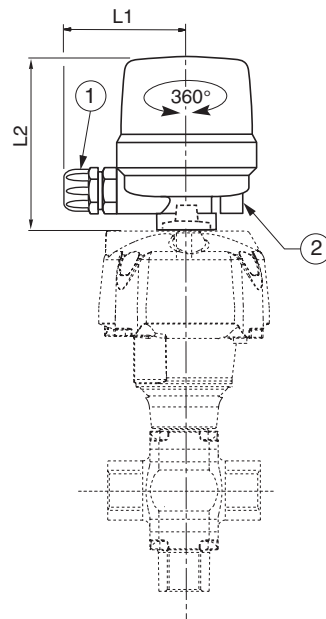


- Installation/maintenance instructions are included with each signaling box

**DIMENSIONS (mm), WEIGHT (kg)**   
Weight of unit alone: 0,310



**2/2 NO-NC**



**3/2 U**

operator dia.	80 mm	100 mm	150 mm	200 mm
L1	68	68	68	68
L2	100	100	100	100
ø G	1/8	1/8	1/4	1/4
ø B	110	132,5	191	247

- ① 1 cable gland (cable Ø 5-10 mm)
- ② Unit rotation lock set screw (orientable through 360°)