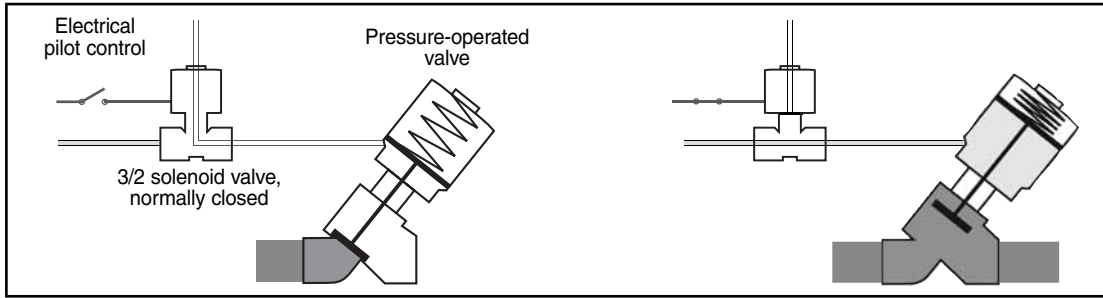
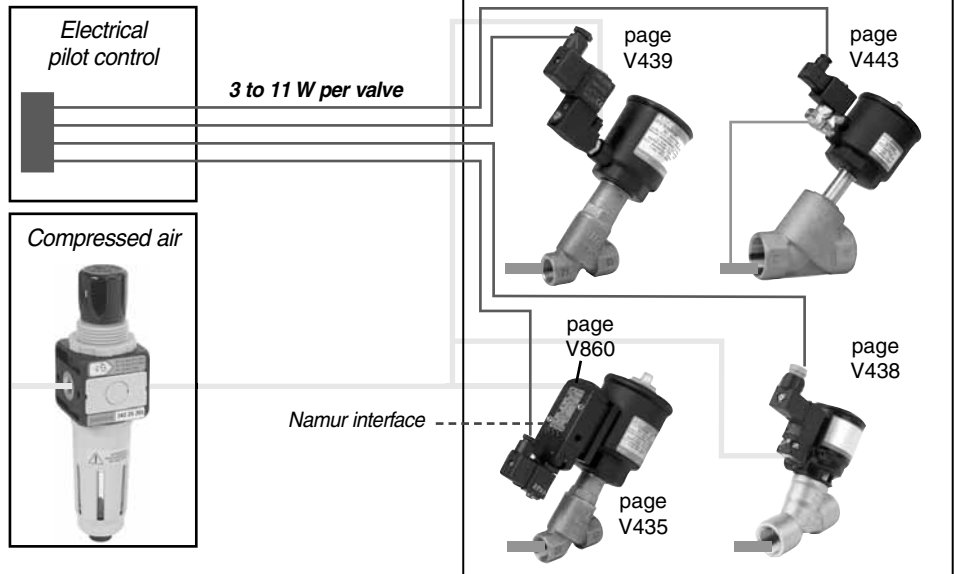


Pressure operated valves are piloted by a 3/2 solenoid valve either directly mounted on the valve or remotely connected.



### DIRECT OPERATED

- Short response times
- Easy on-site testing with the solenoid valve's manual override.
- Possibility to use the fluid (air, water) of the supply line as pilot fluid

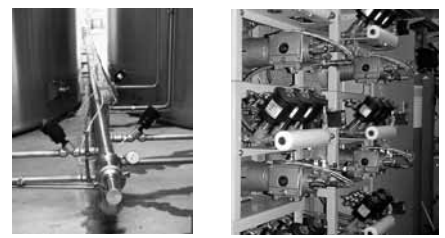
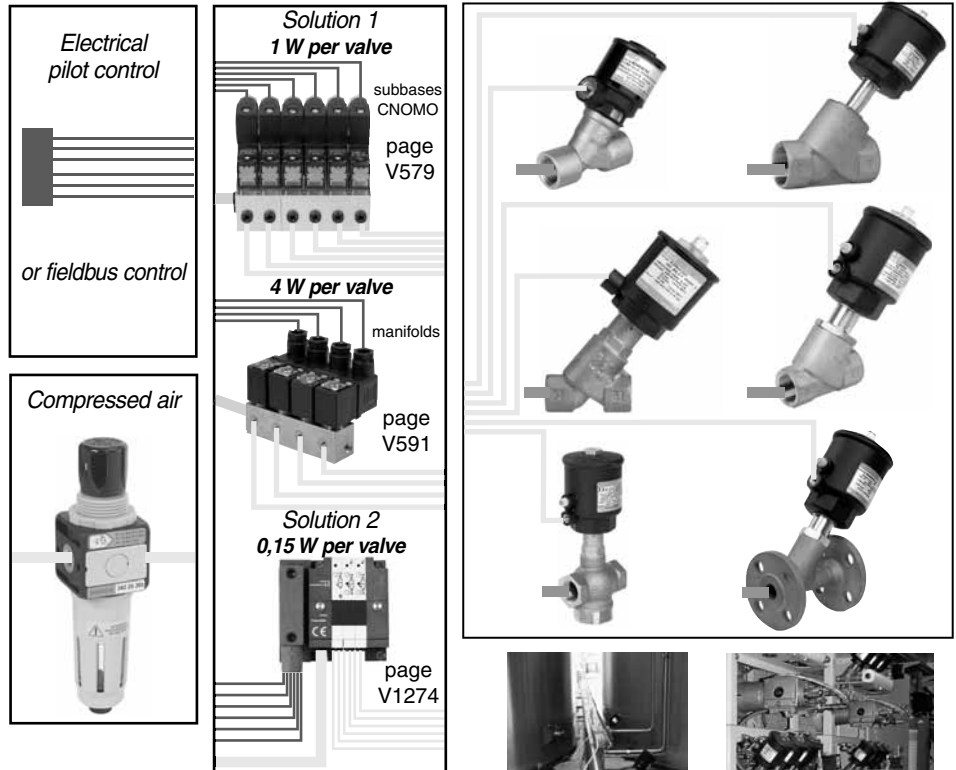


### REMOTE OPERATED

**Solution 1: Solenoid pilot valves** mounted on **joinable subbases according to CNOMO standard** with integrated instant fitting pneumatic connections or on **manifolds**.

**Solution 2: Valve islands**  
Several spool valves, each 8 mm or 13 mm wide and with two 3/2 solenoid pilot valves NC, enable the control of up to 32 valves with a Compact 8 or 13 spool valve island.

- Central electrical connection
- Integrated instant pneumatic fittings
- Compatible with the following fieldbuses:



The valve islands and/or solenoid pilot valves can be grouped together in one place.  
Cabinet installation for use in "aggressive" environments.  
Reduced electrical wiring. Low power consumption.

