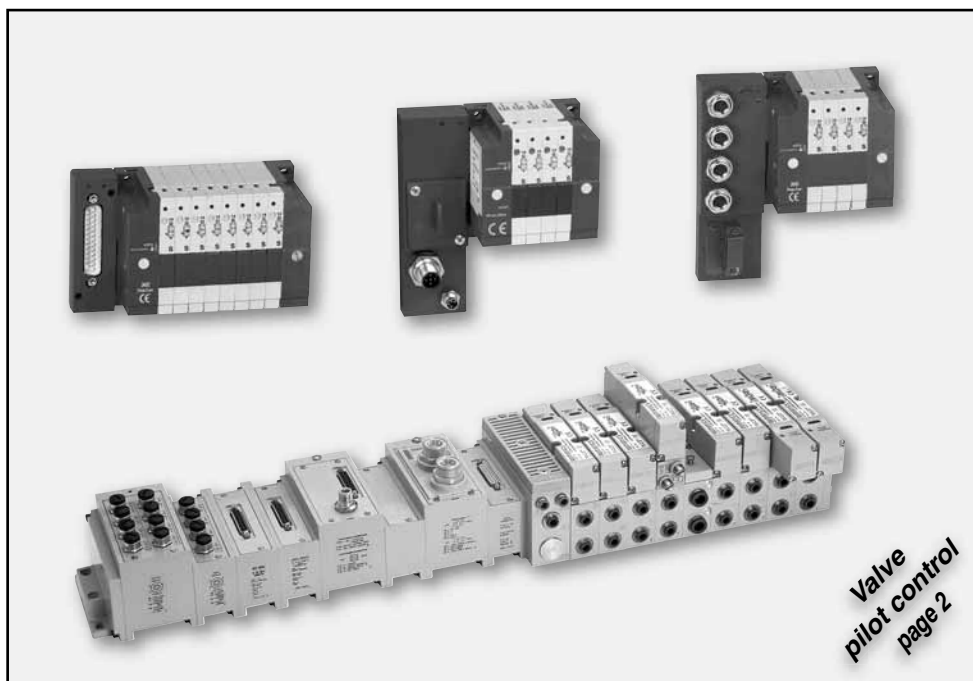


VALVE ISLANDS VALVE PILOT CONTROL

Product Index



Description

Series

Page

VALVE ISLANDS WITH MULTIWIRE CABLE CONNECTION (MULTIPOL)

COMPACT 8 & 13, IP65



676 - 677

V1274

Series 2000



2002-2005
2012-2035

V1287

VALVE ISLANDS WITH FIELDBUS CONTROL (BUSLINK)

COMPACT 8 & 13, compatible with communication protocols such as: Profibus-DP / Can Open



676 - 677

V1274

Series 2000, compatible with communication protocols such as: Fieldbus Foundation / Profibus-DP / Control-Net / Device-Net / Ethernet/IP / Modbus TCP / Can Open / AS-Interface / Interbus-S / Allen Bradley 1771 Remote I/O / FIPIO

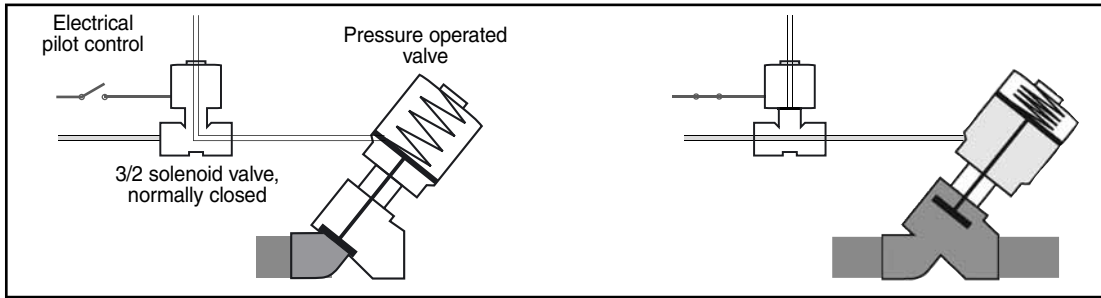


2002-2005
2012-2035

V1287

(For detailed information on these products, please see: www.asconumatics.eu)

Pressure operated valves can be remotely piloted with a valve island.



Valve islands Compact 8 or 13

Several spool valves, each 8 mm or 13 mm wide and with two 3/2 solenoid pilot valves NC, enable the control of up to 32 valves.

- IP65 protection
- Central electrical connection
- Integrated instant pneumatic fittings
- Compatible with the following fieldbuses:



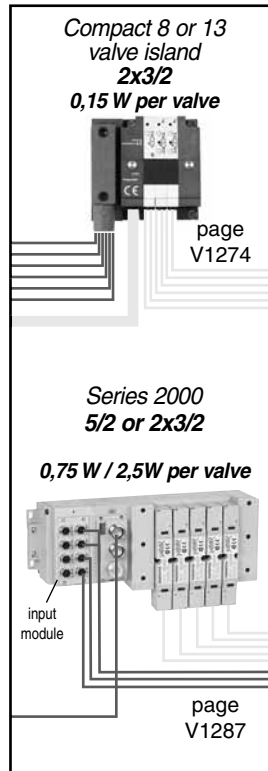
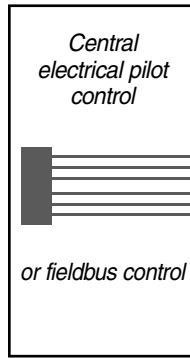
Valve islands Series 2000

Several spool valves, each with two 3/2 solenoid pilot valves NC, enable the control of up to 32 valves.

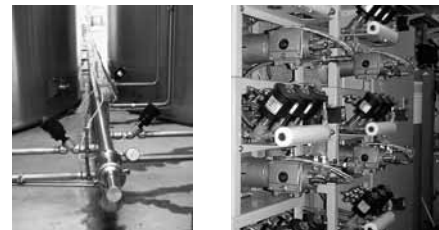
- IP65 protection
- Central electrical connection
- Threaded or instant fitting pneumatic connections
- Compatible with the following fieldbuses:



- Generation C valve islands with fieldbus control intended for use in potentially explosive atmospheres Ex
- Optional subbase with pressure isolation for assembly/disassembly without having to disconnect the pressure supply



The valve islands can be grouped together in one place. Cabinet installation for use in "aggressive" environments. Reduced electrical wiring. Low power consumption.



For more information on valve islands, please see our catalogue "Pneumatic Components for Industrial Automation".