



FEATURES

- To be mounted on the exhaust port of a solenoid valve to protect internal parts from the environment

GENERAL

	Bronze	Sintered st. steel	Porous plastic
Differential pressure	0 to 10 bar	0 to 10 bar	0 to 10 bar
Fluid temperature range	-10°C to +70°C	-10°C to +70°C	-10°C to +70°C
Ambient temperature range	-10°C to +70°C	-10°C to +70°C	-10°C to +70°C
Load loss	Minimum	Minimum	Minimum

CONSTRUCTION

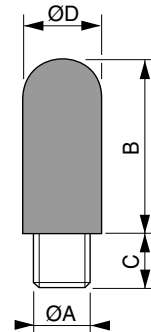
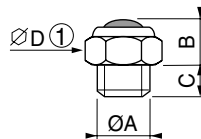
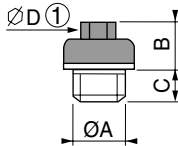
Body	Porous bronze	Sintered stainless steel	Porous plastic
Connection piece	Brass	Nickel-plated brass	Plastic
Pipe size	G 1/8 or G 1/4	G 1/8-1/4-3/8-1/2, M5	G 1/8 or G 1/4



SPECIFICATIONS

pipe size (G)	catalogue number		
	BRONZE (set of 2)	SINTERED STAINLESS STEEL	POROUS PLASTIC
1/8	97701875	34600418	34600406
1/4	97701876	34600419	34600407
3/8	-	34600478	-
1/2	-	34600479	-
M5	-	34600484	-

DIMENSIONS (mm), WEIGHT (kg)



① D across flats

POROUS BRONZE (set of 2)					
catalogue number	Ø A	B	C	D	weight
97701875	G 1/8	7	5	7	0,004
97701876	G 1/4	10	6	9	0,010

SINTERED STAINLESS STEEL					
catalogue number	Ø A	B	C	D	weight
34600418	G 1/8	10	6	13	0,006
34600419	G 1/4	11	8	16	0,010
34600478	G 3/8	11	9	19	0,014
34600479	G 1/2	14	9	24	0,023
34600484	M5	4,5	3,2	8	0,001

POROUS PLASTIC					
catalogue number	Ø A	B	C	D	weight
34600406	G 1/8	27	6	13	0,002
34600407	G 1/4	34	7	15	0,004