



# SOLENOID VALVES

for potentially explosive atmospheres  
 flameproof enclosure  
 II 2 G Ex d IIB + H2 T6..T4, II 2D Ex tD A21 IP65  
 aluminium enclosure, ISO 15218 (CNOMO, size 30) interface



NC



3/2  
 Series  
**374**  
**NK**

## FEATURES

- Solenoid valves equipped with an **NK** type operator operator for use in potentially explosive atmospheres according to Directive ATEX 94/9/EC EC type examination certificate no.: **LCIE 01 ATEX 6050 X**
- Compliance with the Essential Health and Safety Requirements has been assured by compliance with European Standards **EN 60079-0**, **EN 60079-1**, **EN 61241-0** and **EN 61241-1**
- Easy electrical installation by means of a screw terminal coil
- Enclosure provided with a 3/4 NPT threaded entry hole (1/2 NPT or M20 x 1,5 in option) for a broad range of cable entries
- Ingress protection degree IP65
- A wide range of valves can be supplied with the CNOMO size 30 solenoid pilot interface

## GENERAL

**Differential pressure** 0 - 12 bar [1 bar = 100 kPa]  
**Pneumatic interface** ISO 15218 (CNOMO E06.05.80, size 30)  
**Response times** 5 ms

fluids (*)	temperature range (TS)	seal materials (*)
air or inert gas	- 25°C to + 60°C	NBR (nitrile)

## CONSTRUCTION

**Solenoid enclosure** Aluminium, cataphoresis black painting  
**Bonnet, cover screws** Steel  
**Nameplate** Aluminium  
**Coil connection** Embedded screw terminal

## MATERIALS IN CONTACT WITH FLUID

(\*) Ensure that the compatibility of the fluids in contact with the materials is verified.

**Body** Aluminium, black anodized  
**Core, core tube and plugnut** Stainless steel  
**Shading coil** Copper  
**Internal parts, springs** Stainless steel  
**Seals** NBR

## ELECTRICAL CHARACTERISTICS

**Coil insulation class** F **SAFETY CODE** II 2 G Ex d IIB + H2 T6..T4  
 II 2 D Ex tD A21 IP65 T85°C..T135°C  
**Standard voltages** DC (=) : 24V - 48V  
 (Other voltages and 60 Hz on request) AC (~) : 24V - 48V - 115V - 230V / 50 Hz

prefix option	power ratings				operator ambient temperature range (TS) (C°)	replacement coil		type <sup>(1)</sup>
	inrush ~	holding ~	hot/cold =			~	=	
	(VA)	(VA)	(W)	(W)		230 V/50 Hz	24 V DC	
NK	55	23	10,5	9 / 11,2	-20 to + 60	-	-	01

<sup>(1)</sup> Refer to the dimensional drawings on the following page.

## TEMPERATURE CLASSIFICATION TABLES

### AC (~) Solenoids

Pn (watt)	coil size MXX	maximum ambient °C <sup>(1)</sup> surface temperature			
		T6 85°C	T5 100°C	T4 135°C	T3 200°C
10,5	●				60

insulation class F (155°C) 100% E.D.

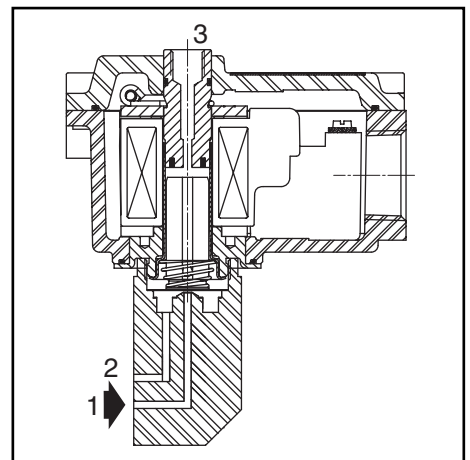
### DC (=) Solenoids

Pn (watt)	coil size MXX	maximum ambient °C <sup>(1)</sup> surface temperature			
		T6 85°C	T5 100°C	T4 135°C	T3 200°C
11,2	●	25	40	60	

insulation class F (155°C) 100% E.D.

## SPECIFICATIONS

pipe size	orifice size		flow coefficient Kv				operating pressure differential (bar)				power coil (W)	catalogue number		
	1 → 2	2 → 3	1 → 2		2 → 3		min.	max. (PS)		~		=	without manual operator	with maintained manual operator
	(mm)	(mm)	(m³/h)	(l/min)	(m³/h)	(l/min)		air (*)	~					
<b>NC - Normally closed</b>														
pad mount	2	-	0,11	1,8	-	-	0	12	12	10,5	11,2	NKS374A090	NKS374A090MS	



### INSTALLATION

- The solenoid valves can be mounted in any position without affecting operation
- The solenoid valves are supplied with mounting screws
- Mounting on valve or single, non-joinable subbase with ISO 15218 (CNOMO, size 30) interface
- Pipe connections G 1/8 have standard thread according to ISO 228/1
- Installation/maintenance instructions are included with each solenoid valve

### OPERATOR CONNECTION

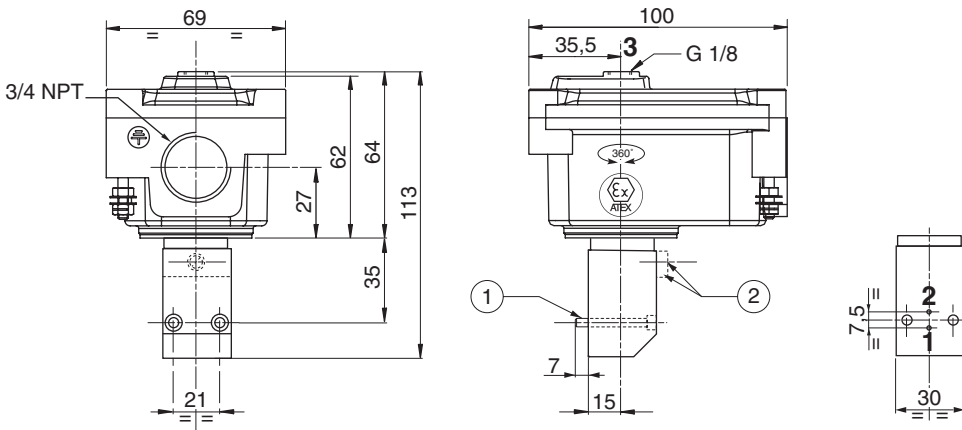
- Any ATEX approved cable entry device can be fitted in the 3/4" NPT threaded entry hole (1/2 NPT, prefix "T", or M20 x 1.5, prefix "ET", in option); supplied without cable gland
- Internal and external earthing connection
- The operator can be rotated through 360° to select the most favourable position for cable entry

### DIMENSIONS (mm), WEIGHT (kg)



#### TYPE 01

Prefix "NK" Solenoid  
Aluminium, epoxy coated  
EN 60079-1 and EN 61241-1  
II 2 G Ex d IIB + H2 - II 2D Ex tD A21 IP65



type	weight <sup>(1)</sup>
01	0,63

- ① Mounting: two screws M4 x 35
- ② Manual operator location

<sup>(1)</sup> Without cable gland.