

FEATURES

- Valves do not require a minimum operating pressure and have a high operating pressure as indicated
- Valves operation is not affected by mounting position
- The solenoid valves satisfy all relevant EC directives

GENERAL

Differential pressure See «SPECIFICATIONS» [1 bar =100 kPa]
Maximum viscosity 65 cSt (mm²/s)
Response time 5 - 25 ms

fluids (*)	temperature range (TS)	seal materials (*)
air, inert gas, water, oil	- 20°C to + 90°C - 20°C to + 40°C	NBR (nitrile) UR (cast urethane)

MATERIALS IN CONTACT WITH FLUID

(*) Ensure that the compatibility of the fluids in contact with the materials is verified

	Brass body	Stainless steel body
Body	Brass	AISI 303 SS
Core tube	Stainless steel	Stainless steel
Core and plugnut	Stainless steel	Stainless steel
Springs	Stainless steel	Stainless steel
Seat	Brass	Stainless steel
Seals	NBR	NBR
Disc	NBR or UR	NBR or UR
Disc holder (NO function)	POM	POM
Shading coil	Copper	Silver

ELECTRICAL CHARACTERISTICS

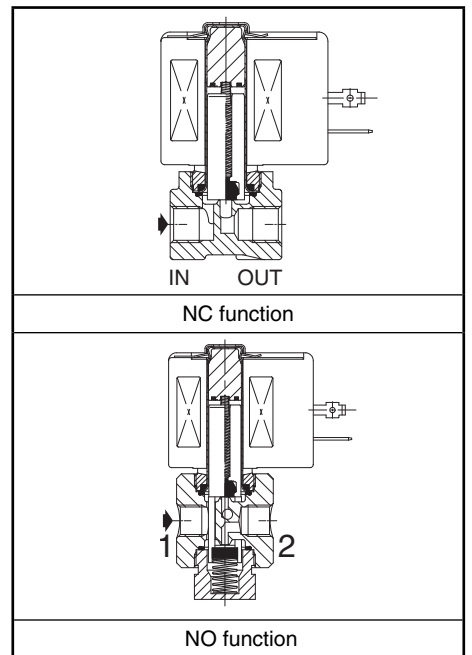
Coil insulation class F
Connector Spade plug (cable Ø 6-10 mm)
Connector specification ISO 4400 / EN 175301-803, form A
Electrical safety IEC 335
Electrical enclosure protection Moulded IP65 (EN 60529)
Standard voltages DC (=) : 24V - 48V
 (Other voltages and 60 Hz on request) AC (~) : 24V - 48V - 115V - 230V / 50 Hz

prefix option	power ratings			operator ambient temperature range (TS) (C°)	replacement coil		type ⁽¹⁾	
	inrush ~ (VA)	holding ~ (W)			~	=		
		(VA)	(W)		230 V/50 Hz	24 V DC		
SC	34	15,6	6	7 / 9,7	-20 to + 75	400325-117	400325-142	01
	30	22,5	9	9,5/15,3	-20 to + 50	400325-217	400325-242	

⁽¹⁾ Refer to the dimensional drawings on the following page.

SPECIFICATIONS

pipe size	orifice size (mm)	flow coefficient Kv (m ³ /h) (l/min)		operating pressure differential (bar)						power coil (W)		catalogue number		options						
		min.	max. (PS)			air (*)	water (*)	oil (*)	~	=	brass ~/=	stainless steel ~/=	maintained man. operator	impulse man. operator	FPM	EPDM	CR	PTFE		
			~	=	~														=	~
NC - Normally closed, NBR seals and disc																				
G 1/8	1,2	0,05	0,8	0	50	45	50	45	35	35	6	9,7	SCG262C001	-	-	-	V	E	J	T
NPT 1/8													-	SCB262C012	MO	-	V	E	J	T
G 1/8	2,4	0,17	2,8	0	20	10	20	10	10	9	6	9,7	SCG262C014	-	-	-	V	E	J	T
NPT 1/8													-	SCB262C015	-	-	V	E	J	T
G 1/8	2,4	0,17	2,8	0	23	15	28	15	20	13	9	15,3	SCG262C011	-	-	-	V	E	J	T
G 1/8													-	SCG262C002	-	MO	-	V	E	J
NPT 1/8	3,2	0,3	5	0	11	5	12	5	9	7	6	9,7	-	SCB262C006	MO	-	V	E	J	T
G 1/8													-	SCG262C016	-	MO	-	V	E	J
NC - Normally closed, NBR seals and UR disc																				
G 1/8	1,2	0,05	0,8	0	130	-	100	-	60	-	9	-	SCG262C095	-	-	-	-	-	-	T
NPT 1/8													-	SCB262C079	-	-	-	-	-	T
NO - Normally open, NBR seals and disc																				
Rp 1/8	1,6	0,08	1,3	0	35	27	20	17	15	10	6	9,7	SCE262C091	-	-	-	V	E	J	T
NPT 1/8													-	SCB262C092	-	-	V	E	J	T
Rp 1/8	2,4	0,13	2,7	0	20	13	13	7	10	7	6	9,7	SCE262C093	-	-	-	V	E	J	T
NPT 1/8													-	SCB262C094	-	-	V	E	J	T
Rp 1/8	3,2	0,18	3	0	8	5	7	4	6	3	6	9,7	SCE262C031	-	MO	V	E	J	T	
NPT 1/8													-	SCB262C035	-	MO	V	E	J	T



OPTIONS

- Valves can also be supplied with FPM (fluoroelastomer), EPDM (ethylene-propylene), CR (chloroprene) and PTFE seals and discs. Use the appropriate optional suffix letter for identification
- Waterproof enclosure with embedded screw terminal coil according to protection class IP67, CEE-10
- Explosionproof enclosures for use in zones 1/21-2/22, categories 2-3 to ATEX Directive 94/9/EC (see "Explosionproof solenoids" section)
- Electrical enclosures according to "NEMA" standards are available
- Compliance with "UL", "CSA" and other local approvals available on request
- Mounting brackets for brass body valves, suffix MB
- Other pipe connections are available on request
- Plug with visual indication and peak voltage suppression or with cable length of 2 m (see Solenoids, Coils & Accessories section)

INSTALLATION

- The solenoid valves can be mounted in any position without affecting operation
- Solenoid valves have 2 mounting holes in body
- Stainless steel valves are standard supply with mounting brackets
- Pipe connection identifier is G = G (ISO 228/1), E = Rp (ISO 7/1) or B = NPT (ANSI 1.20.3)
- Installation/maintenance instructions are included with each valve

SPARE PARTS KIT & ACCESSORIES

catalogue number	spare parts kit no.		mounting bracket no.
	~	=	
SCG262C001	C302006	C302058	164706-001
SCG262C002/011/014/016	C302014	C302058	164706-001
SCG262C006/015	C302016	C302060	164706-001
SCG262C012	C302008	C302060	164706-001
SCG262C079	C302012	-	164706-001
SCG262C095	C302010	-	164706-001
SCE262C031	C302012	-	164706-001
SCE262C091	C097847	C100056	212299-001
SCE262C093	C097848	C100056	212299-001
SCB262C035	C302043	C302074	212299-001
SCB262C092	C302043	C302074	212299-001
SCB262C094	C302043	C302074	212299-001

(1) Standard prefixes/suffixes are also applicable to kits.
- Not available

ORDERING EXAMPLES:

SC	G	262	C 001	230V / 50 Hz
SC	B	262	C 006	MO 115V / 50 Hz
SC	G	262	C 002	V 24V / DC
SC	E	262	C 091	230V / 50 Hz

prefix pipe thread basic number voltage suffix

ORDERING EXAMPLES KITS:

C302006 ⁽¹⁾	
C100056	V
C097847	E

basic number suffix

DIMENSIONS (mm), WEIGHT (kg)

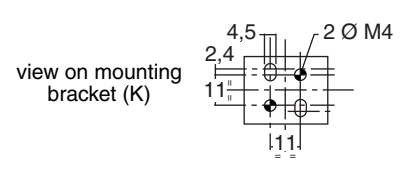
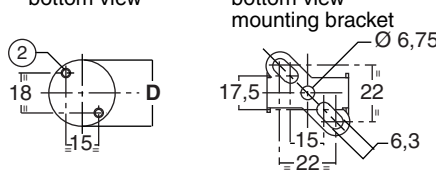
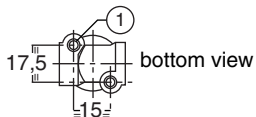
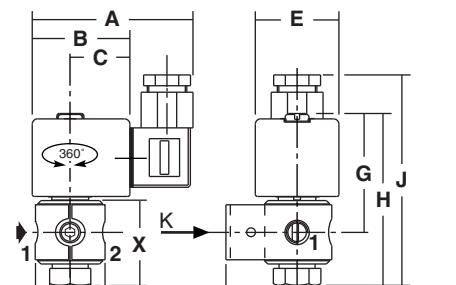
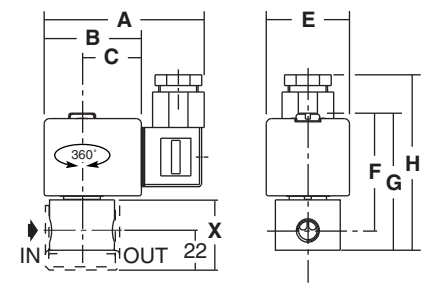
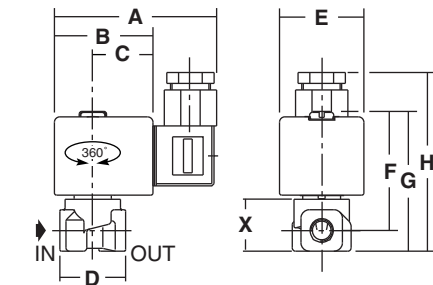


TYPE 01
Prefix "SC" Solenoid
Epoxy moulded
IEC 335 / ISO 4400
IP65

SCG262C001/002/011/014/016/095

SCB262C006/012/015/079

SCE262C091/093/031
SCB262C092/094/035



type	prefix option	catalogue number	A	B	C	D	E	F	G	H	J	X	weight ⁽²⁾
01	SC	SCG262C001/002/011/014/016/095	75	45	27	30	39	56	64	81	-	25	0,4
		SCB262C006/012/015/079	75	45	27	30	39	56	64	80	-	36	0,4
		SCE262C091/093/031	75	45	27	30	39	33	57	79	95	40	0,45
		SCB262C092/094/035	75	45	27	30	39	33	57	79	95	40	0,45

2 mounting holes Ø M4:

① depth 6 mm

② depth 8 mm

[Mounting hole thread may differ if pipe connection is changed (NPT, ...).]

(2) Incl. coil(s) and connector(s).